

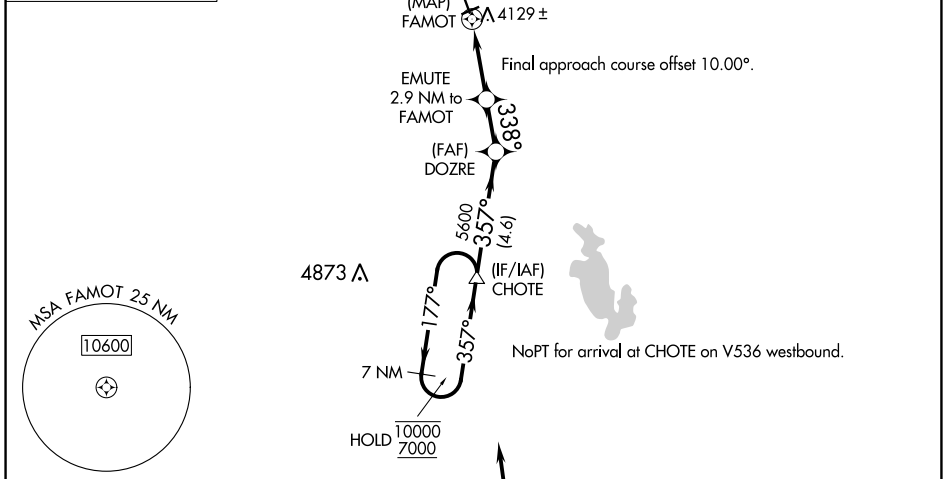
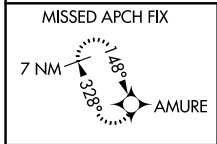
APP CRS 338°	Rwy ldg 5000
	TDZE 3943
	Apt Elev 3947

RNAV (GPS) RWY 33

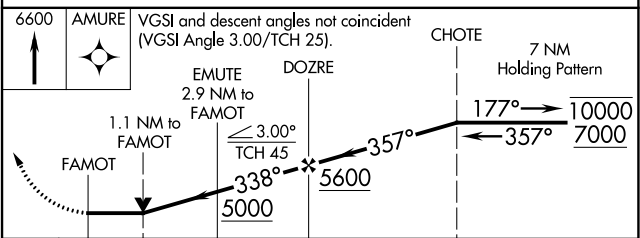
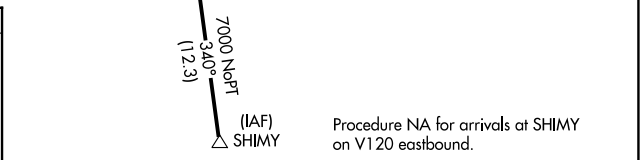
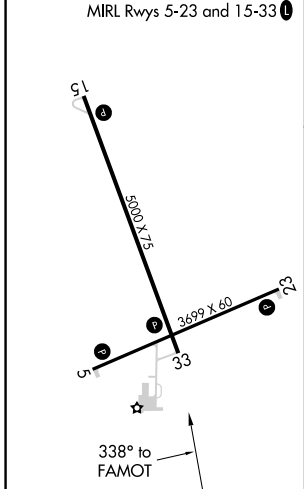
CHOTEAU (CII)

RNP APCH.	MISSED APPROACH: Climb to 6600 direct AMURE and hold.
NA Rwy 33 helicopter visibility reduction below 3/4 SM NA.	

AWOS-2 119.275	SALT LAKE CITY CENTER 133.4 285.4	UNICOM 122.8 (CTAF) 0
--------------------------	---	---------------------------------



ELEV 3947	TDZE 3943
-----------	-----------



CATEGORY	A	B	C	D
INAV MDA	4380-1	437 (500-1)	4380-1¼	437 (500-1¼)
CIRCLING	4440-1	493 (500-1)	4600-1¾ 653 (700-1¾)	4900-3 953 (1000-3)