

WAAS CH 49133 W36A	APP CRS 001°	Rwy Idg TDZE Apt Elev	5003 164 164
--	------------------------	-----------------------------	---

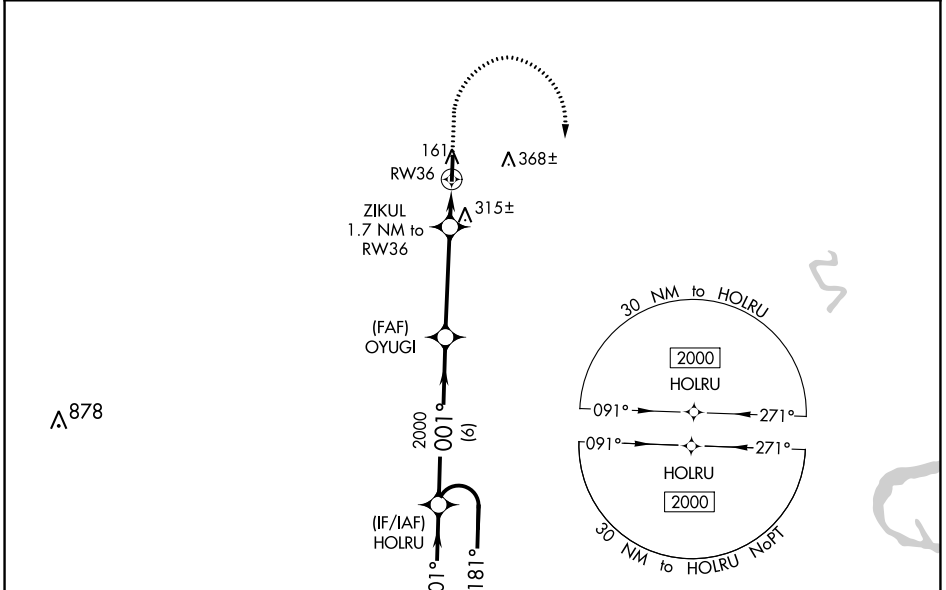
RNAV (GPS) RWY 36

BILLY FREE MUNI (ØMØ)

⚠ Baro-VNAV NA. DME/DME RNP-0.3 NA. Use Pine Bluff altimeter setting, when not received use Greenville, MS altimeter setting and increase all DA 22 feet and all MDA 40 feet; increase LPV all Cats visibility 1/8 mile and Circling Cat C visibility 1/4 mile. Helicopter visibility reduction below 3/4 SM NA.

MISSED APPROACH: Climb to 1000 then climbing right turn to 2000 direct HOLRU and hold.

PBF ASOS 120.775	MEMPHIS CENTER 135.875 269.35	UNICOM 122.8 (CTAF) Ø
----------------------------	---	---------------------------------



4 NM Holding Pattern		HOLRU	OYUGI	ZIKUL	RW36
2000 ← 181°		2000	2000	1000	2000
001° →		001°	*740	*LNNAV only.	
GP 3.00° TCH 40		6 NM	3.9 NM	1.7 NM	
CATEGORY	A	B	C	D	
LPV DA	481-1	317 (400-1)		NA	
LNNAV/VNAV DA	492-1 1/8	328 (400-1 1/8)		NA	
LNNAV MDA	640-1	476 (500-1)	640-1 3/8 476 (500-1 3/8)	NA	
C CIRCLING	780-1	616 (700-1)	800-1 3/4 636 (700-1 3/4)	NA	

