

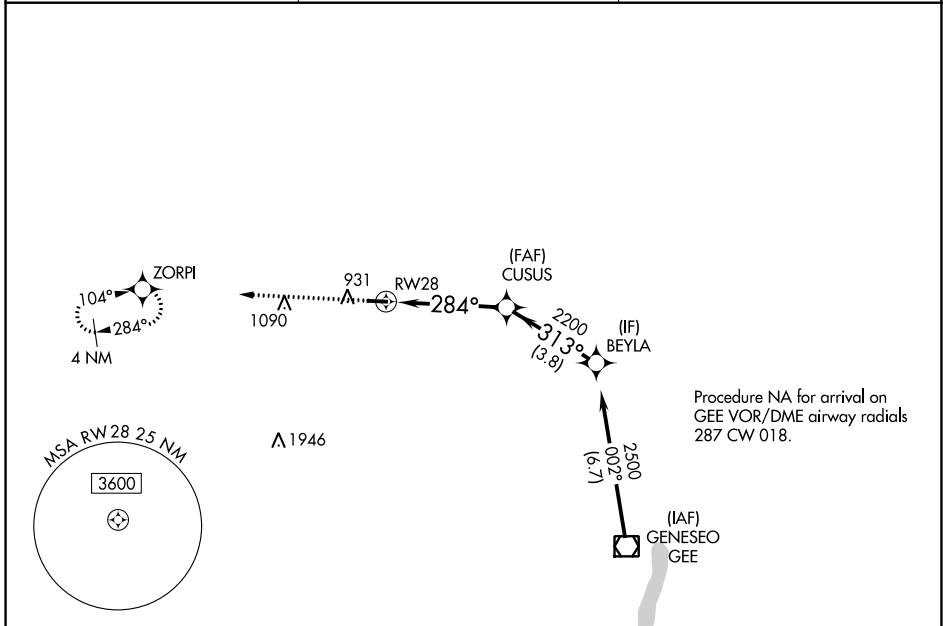
WAAS CH 69330 W28A	APP CRS 284°	Rwy Idg TDZE Apt Elev	3854 778 780
--	------------------------	-----------------------------	---

RNAV (GPS) RWY 28

LE ROY (5G \emptyset)

RNP APCH.	MISSED APPROACH: Climb to 3000 direct ZORPI and hold.
<p>▼ Procedure NA at night. Rwy 28 helicopter visibility reduction below 1 SM NA.</p> <p>▲ NA Use Frederick Douglass/Greater Rochester Intl altimeter setting.</p>	

ROC ASOS 124.825	ROCHESTER APP CON 123.7 322.3	UNICOM 122.8 (CTAF) \emptyset
----------------------------	---	--



ELEV 780	TDZE 778
----------	----------



Visual Segment - Obstacles.		BEYLA	
3000 ZORPI		2500	
RWY 28		CUSUS	
284°		313°	
2200		2500	
4.3 NM		3.8 NM	

CATEGORY	A	B	C	D
LP MDA	1 240-1	462 (500-1)	NA	
LNAV MDA	1 240-1	462 (500-1)	NA	

RNAV (GPS) RWY 28

NE-2, 26 DEC 2024 to 23 JAN 2025

NE-2, 26 DEC 2024 to 23 JAN 2025