

WAAS CH <b>78438</b> <b>W28A</b>	APP CRS <b>280°</b>	Rwy Idg TDZE Apt Elev	<b>5001</b> <b>197</b> <b>197</b>
--	------------------------	-----------------------------	---

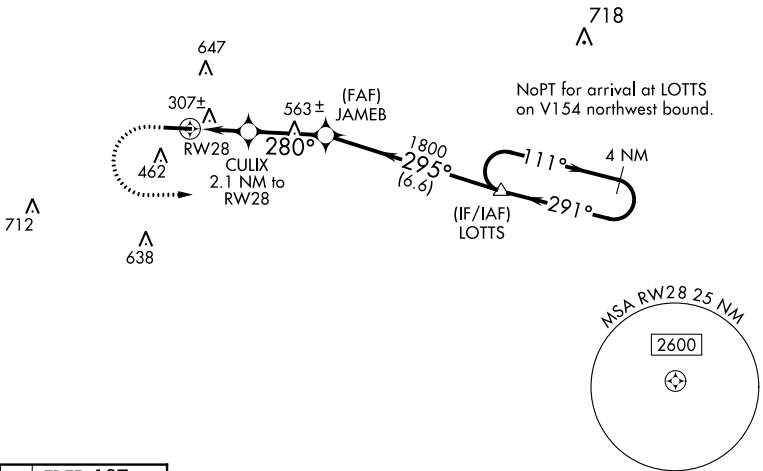
# RNAV (GPS) RWY 28

JOHN EDWIN JONES SR FLD/METTER MUNI (MHP)

**Baro-VNAV NA. DME/DME RNP-0.3 NA. Helicopter visibility reduction below 1 SM NA. Use Claxton altimeter setting; when not received, use Vidalia altimeter setting and increase LPV DA to 500, LNAV/VNAV DA to 533, increase all MDA 20 feet, increase LNAV/VNAV all Cats and LNAV Cat C/D visibility 1/8 mile and Circling Cat C/D visibility 1/4 mile.**

**MISSED APPROACH:** Climb to 700 then climbing left turn to 3000 direct LOTTs and hold.

AWOS-3PT <b>120.3</b>	CWV AWOS-3 <b>120.075</b>	JACKSONVILLE CENTER <b>132.925 363.2</b>	UNICOM <b>123.0 (CTAF) 0</b>
--------------------------	------------------------------	---	---------------------------------



ELEV 197	TDZE 197
----------	----------

**700** **3000** **LOTTs** **VGSI and RNAV glidepath not coincident (VGSI Angle 3.00°/TCH 27).**

**\*LNAV only.**

Diagram showing approach path with altitudes: 700, 3000, LOTTs, 1800, 295°, 111°, 3000, 291°, 1800, 280°, 920, 2.1 NM, 2.8 NM, 6.6 NM, GP 3.00°, TCH 57.

CATEGORY	A	B	C	D
LPV DA	494-1 297 (300-1)			
LNAV/VNAV DA	527-1 330 (400-1)			
LNAV MDA	620-1 423 (500-1)		620-1¼ 423 (500-1¼)	
<b>C</b> CIRCLING	820-1 623 (700-1)	880-1 683 (700-1)	1060-2½ 863 (900-2½)	1060-2¾ 863 (900-2¾)

METTER, GEORGIA  
Amdt 1 26MAY16

JOHN EDWIN JONES SR FLD/METTER MUNI (MHP)  
32°22'N-82°05'W  
**RNAV (GPS) RWY 28**

SE-4, 26 DEC 2024 to 23 JAN 2025

SE-4, 26 DEC 2024 to 23 JAN 2025