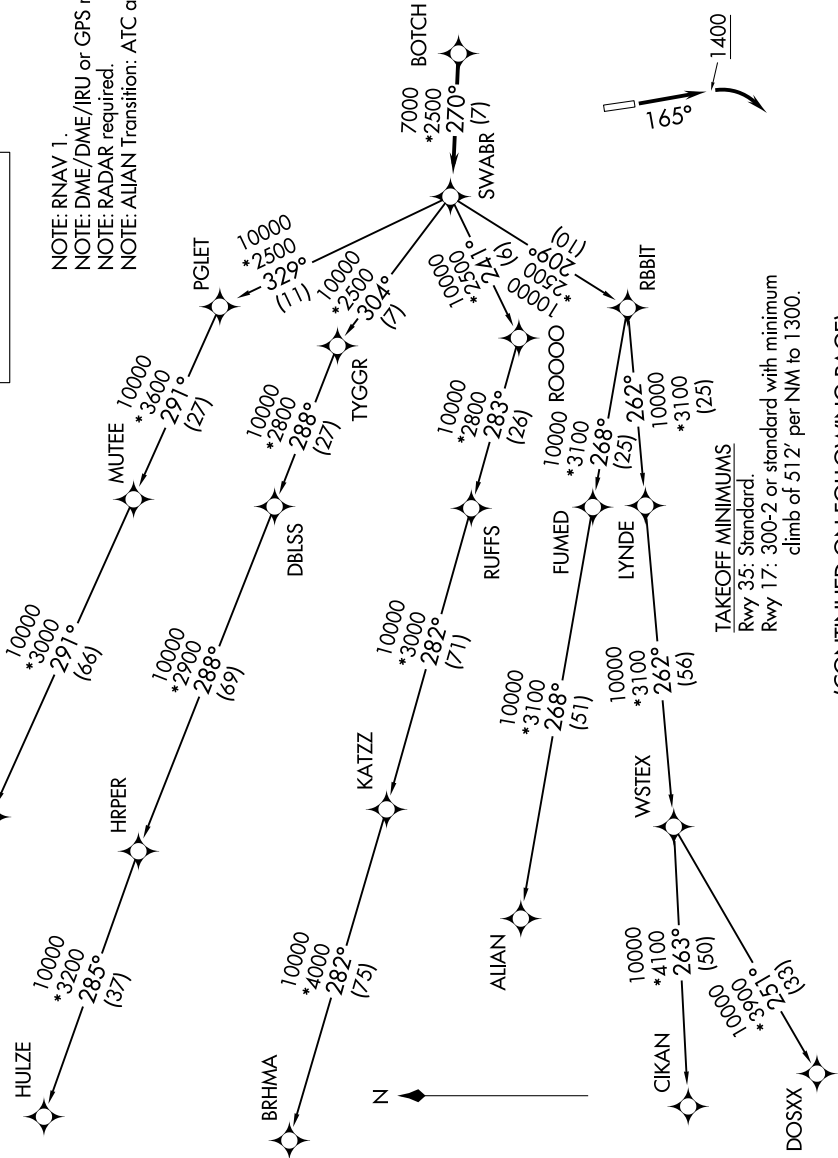


SWABR ONE DEPARTURE (RNAV)

LONE STAR DEP CON
135.975 379.9
CTAF
123.0

TOP ALTITUDE: ASSIGNED BY ATC

NOTE: RNAV 1.
NOTE: DME/DME/IRU or GPS required.
NOTE: RADAR required.
NOTE: ALIAN Transition: ATC assigned only.



TAKEOFF MINIMUMS
Rwy 35: Standard.
Rwy 17: 300-2 or standard with minimum
climb of 512' per NM to 1300.

(CONTINUED ON FOLLOWING PAGE)

NOTE: Chart not to scale.