

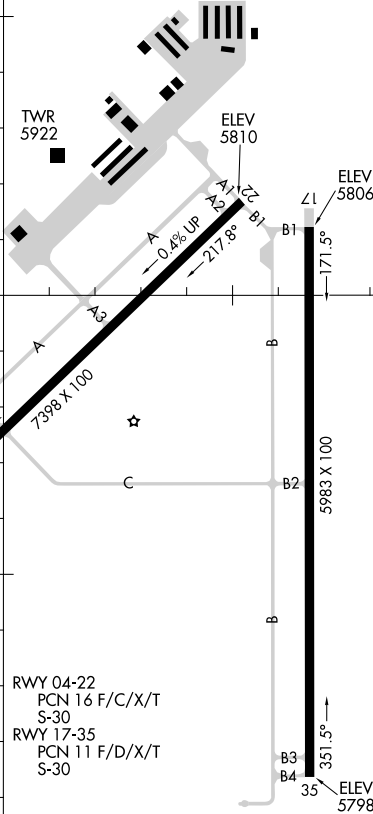
AIRPORT DIAGRAM

AL-6859 (FAA)

DOUBLE EAGLE II (A/E/G)
ALBUQUERQUE, NEW MEXICO

ATIS
 119.025
 DOUBLE EAGLE II*
 120.15
 GND CON
 121.625
 CLNC DEL
 124.8 (When twr closed)

VAR 8.4° E
 JANUARY 2020
 ANNUAL RATE OF CHANGE
 0.1° W



RWY 04-22
 PCN 16 F/C/X/T
 S-30
 RWY 17-35
 PCN 11 F/D/X/T
 S-30

FIELD ELEV 5837

CAUTION: BE ALERT TO RUNWAY CROSSING CLEARANCES.
READBACK OF ALL RUNWAY HOLDING INSTRUCTIONS IS REQUIRED.

106°48'W

106°47'W

35°09'N

35°08'N

SW-1, 26 DEC 2024 to 23 JAN 2025

SW-1, 26 DEC 2024 to 23 JAN 2025

AIRPORT DIAGRAM

ALBUQUERQUE, NEW MEXICO
DOUBLE EAGLE II (A/E/G)