

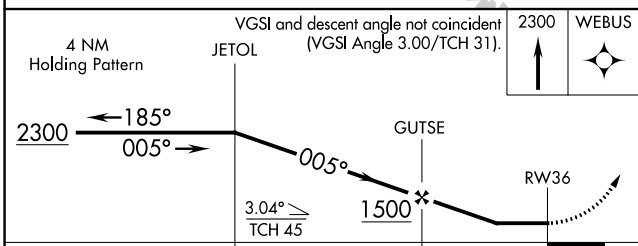
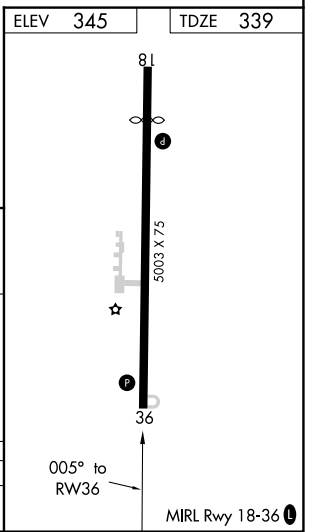
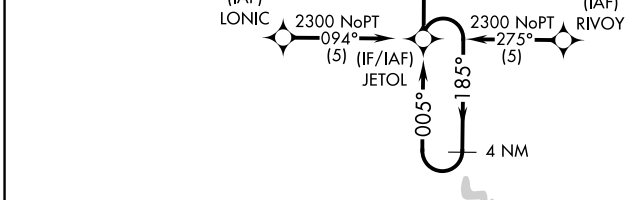
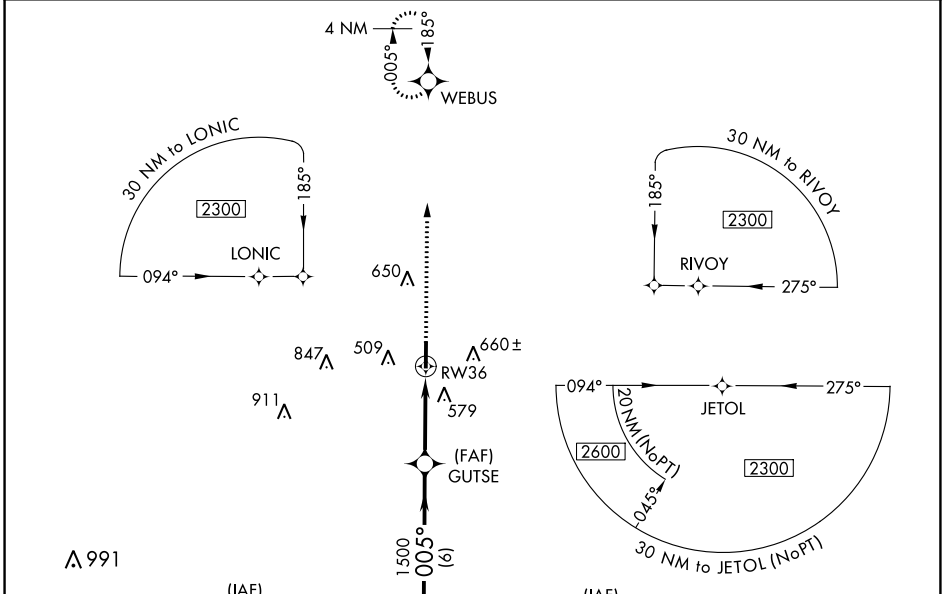
APP CRS	Rwy Idg	<b>5003</b>
<b>005°</b>	TDZE	<b>339</b>
	Apt Elev	<b>345</b>

# RNAV (GPS) RWY 36

DR C P SAVAGE SR (53A)

RNP APCH.	<p>Use Americus altimeter setting, when not received use Macon altimeter setting and increase all MDA 20 feet, increase LNAV Cat C visibility to 1<math>\frac{3}{4}</math>. Procedure NA at night. Rwy 36 helicopter visibility reduction below 1 SM NA.</p>	<p>MISSED APPROACH: Climb to 2300 direct WEBUS WP and hold.</p>
<p><b>▽</b> Use Americus altimeter setting, when not received use Macon altimeter setting and increase all MDA 20 feet, increase LNAV Cat C visibility to 1<math>\frac{3}{4}</math>. Procedure NA at night. Rwy 36 helicopter visibility reduction below 1 SM NA.</p> <p><b>△</b> NA</p>		

ACJ AWOS-3 <b>128.375</b>	ATLANTA APP CON * <b>124.2 279.6</b>	CTAF <b>122.9</b>
------------------------------	---	----------------------



CATEGORY	A	B	C	D
LNAV MDA	900-1	561 (600-1)	900-1 $\frac{5}{8}$ 561 (600-1 $\frac{5}{8}$ )	NA

SE-4, 26 DEC 2024 to 23 JAN 2025

SE-4, 26 DEC 2024 to 23 JAN 2025