

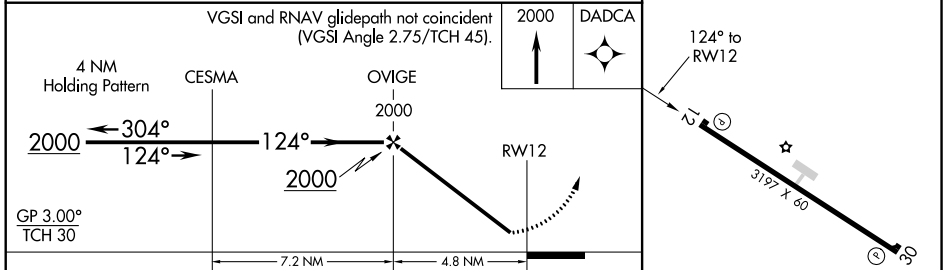
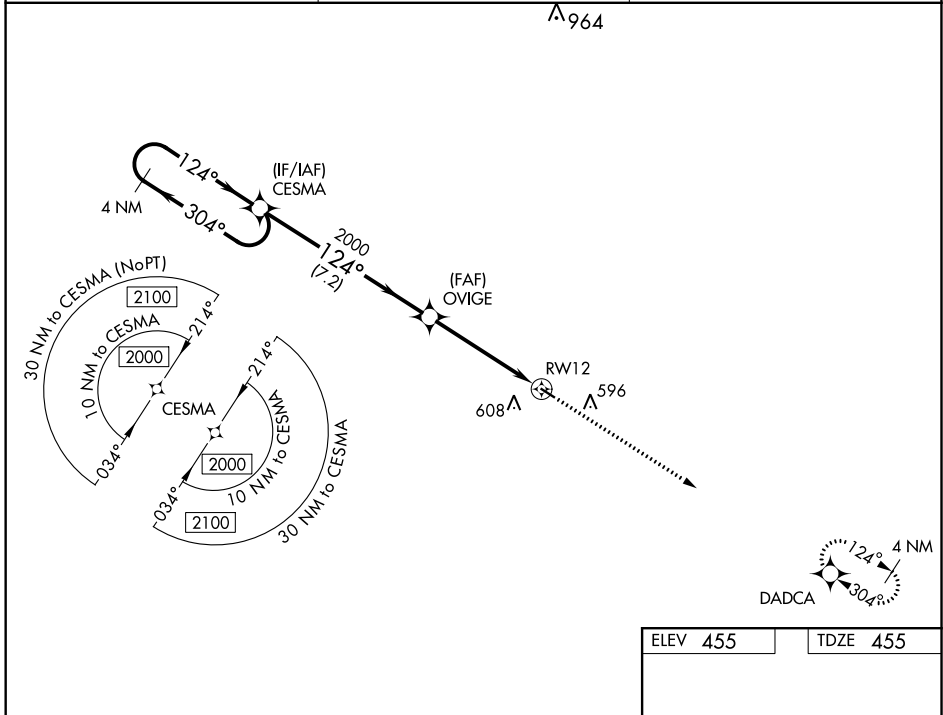
WAAS CH 90408 W12A	APP CRS 124°	Rwy Idg TDZE 455 Apt Elev 455
--	------------------------	---

RNAV (GPS) RWY 12

PRENTISS-JEFFERSON DAVIS COUNTY (M43)

RNP APCH.	<p>▽ Baro-VNAV NA. Use Brookhaven altimeter setting; when not received, use Hattiesburg/Laurel altimeter setting and increase all DA 27 feet and all MDA 40 feet and increase LPV and LNAV/VNAV all Cats visibility $\frac{1}{8}$ mile. Rwy 12 helicopter visibility reduction below $\frac{3}{4}$ SM NA.</p> <p>⚠ NA</p>	<p>MISSED APPROACH: Climb to 2000 direct DADCA and hold.</p>
-----------	---	--

1R7 AWOS-3P 118.125	HOUSTON CENTER 126.8 327.8	UNICOM 122.8 (CTAF) 0
-------------------------------	--------------------------------------	---------------------------------



CATEGORY	A	B	C	D
LPV DA	770-1 $\frac{1}{8}$	315 (400-1 $\frac{1}{8}$)		NA
LNAV/VNAV DA	959-1 $\frac{3}{4}$	504 (600-1 $\frac{3}{4}$)		NA
LNAV MDA	1020-1	565 (600-1)		NA
C CIRCLING	1080-1	625 (700-1)		NA

ELEV 455	TDZE 455
----------	----------

MIRL Rwy 12-30 0

SC-4, 26 DEC 2024 to 23 JAN 2025

SC-4, 26 DEC 2024 to 23 JAN 2025

RNAV (GPS) RWY 12