

WAAS CH 90139 W35A	APP CRS 352°	Rwy Idg TDZE Apt Elev	4794 1010 1033
--	------------------------	-----------------------------	---

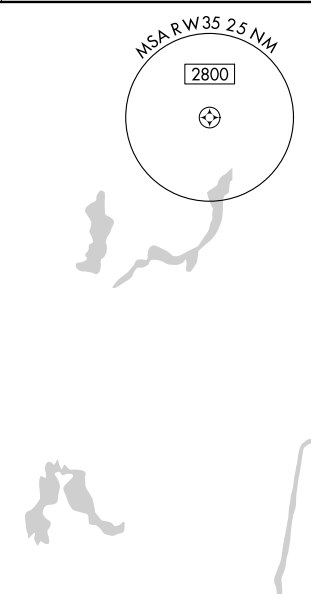
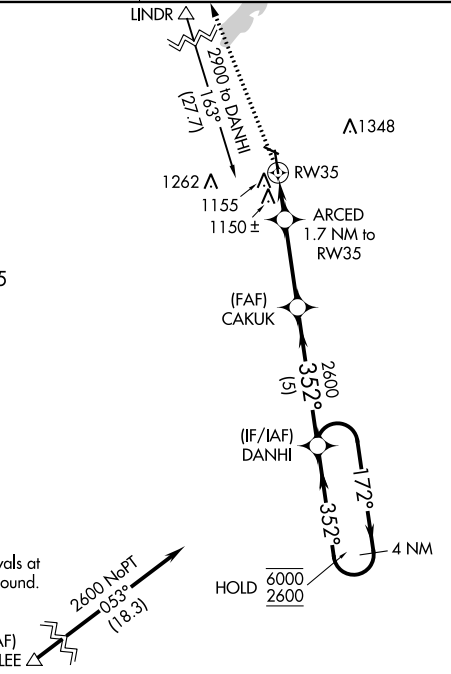
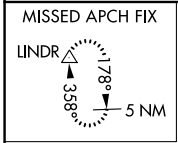
RNAV (GPS) RWY 35

MORA MUNI (JMR)

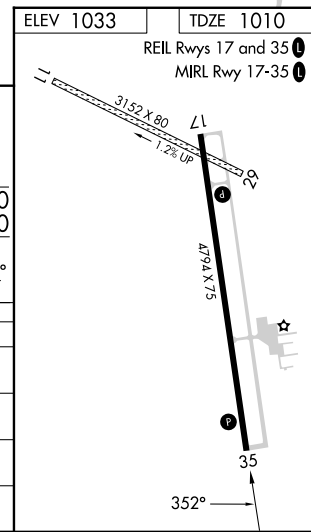
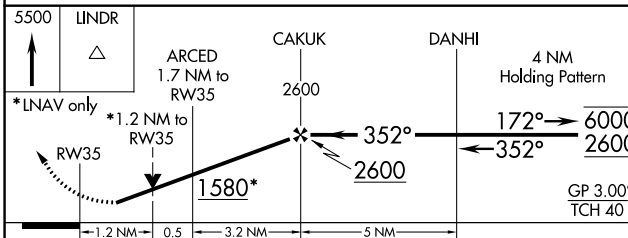
RNP APCH.
 ▼ Circling NA to Rwys 11 and 29. Circling Rwy 17 NA at night.
 ▲ Rwy 35 helicopter visibility reduction below 3/4 SM NA.
 For uncompensated Baro-VNAV systems, LNAV/VNAV NA below -17°C or above 54°C.

MISSED APPROACH: Climb to 5500 direct LINDR and hold, continue climb-in-hold to 5500.

AWOS-3 123.925	MINNEAPOLIS CENTER 121.05 235.775	UNICOM 122.8 (CTAF) 0
--------------------------	---	---------------------------------



Procedure NA for arrivals at OLLEE on T383 southbound.
 (IAF) OLLEE ▲ 2600 NoPT 053° (18.3)
 (IF/IAF) DANHI 2600 352° (G)
 (FAF) CAKUK 2600 352°
 ARCED 1.7 NM to RW35
 1155 1150 ±
 1262 ▲
 2600 to DANHI 163° (27.1)
 2600 to DANHI 163°
 4 NM Holding Pattern
 6000 2600
 172° 352°
 172° 352°
 4 NM
 172° 352°
 4 NM



CATEGORY	A	B	C	D
LPV DA		1269-1	259 (300-1)	
LNAV/VNAV DA		1316-1	306 (300-1)	
LNAV MDA	1420-1	410 (400-1)	1420-1 1/8	410 (400-1 1/8)
C CIRCLING	1480-1 447 (500-1)	1500-1 467 (500-1)	1700-2 667 (700-2)	1700-2 1/4 667 (700-2 1/4)

NC-1, 26 DEC 2024 to 23 JAN 2025

NC-1, 26 DEC 2024 to 23 JAN 2025