

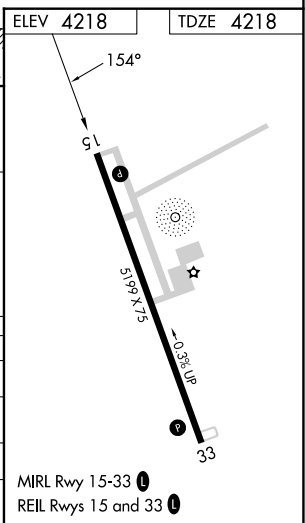
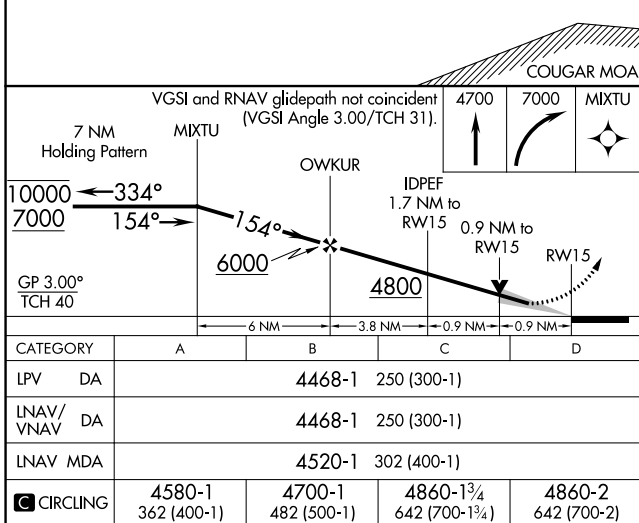
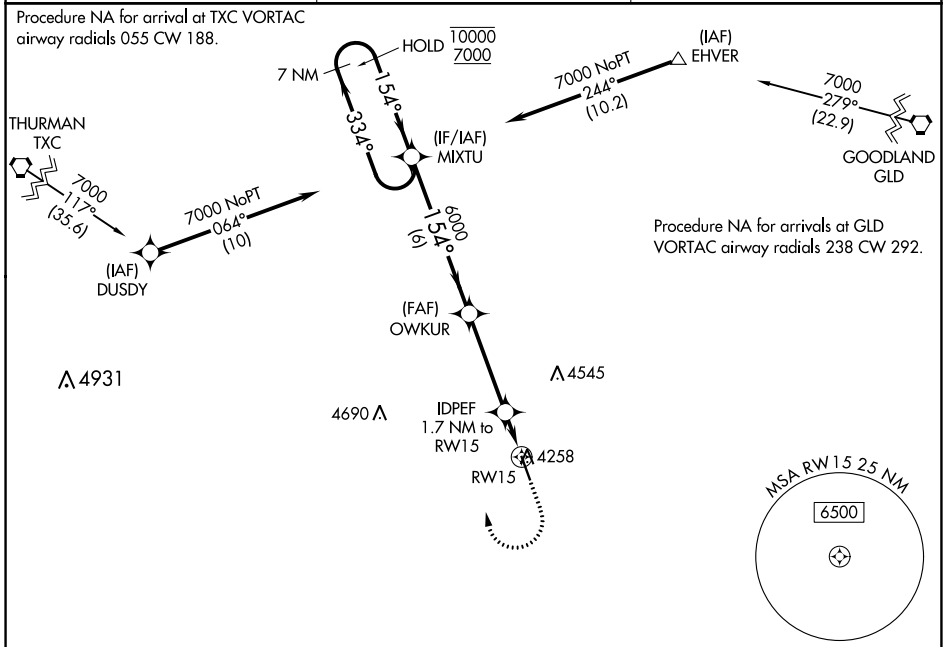
WAAS CH 72999 W15A	APP CRS 154°	Rwy Idg 5199 TDZE 4218 Apt Elev 4218
---------------------------------	------------------------	---

RNAV (GPS) RWY 15

KIT CARSON COUNTY (ITR)

RNP APCH - GPS.	MISSED APPROACH: Climb to 4700 then climbing right turn to 7000 direct MIXTU and hold.
<p>For uncorrected Baro-VNAV systems, LNAV/VNAV NA below -23°C or above 54°C.</p>	

ASOS 135.225	DENVER CENTER 132.7 226.675	UNICOM 122.8 (CTAF) 0
------------------------	---------------------------------------	---------------------------------



SW-1, 26 DEC 2024 to 23 JAN 2025

SW-1, 26 DEC 2024 to 23 JAN 2025