

LOC I-LKU 108.55	APP CRS 272°	Rwy Idg TDZE Apt Elev	4300 494 494
----------------------------	------------------------	-----------------------------	---

LOC RWY 27

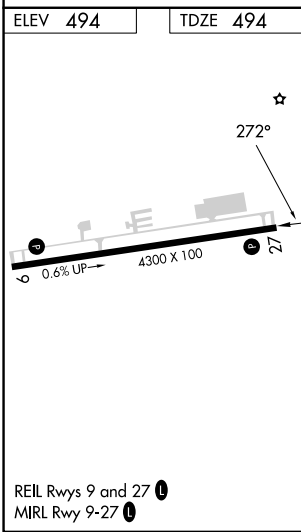
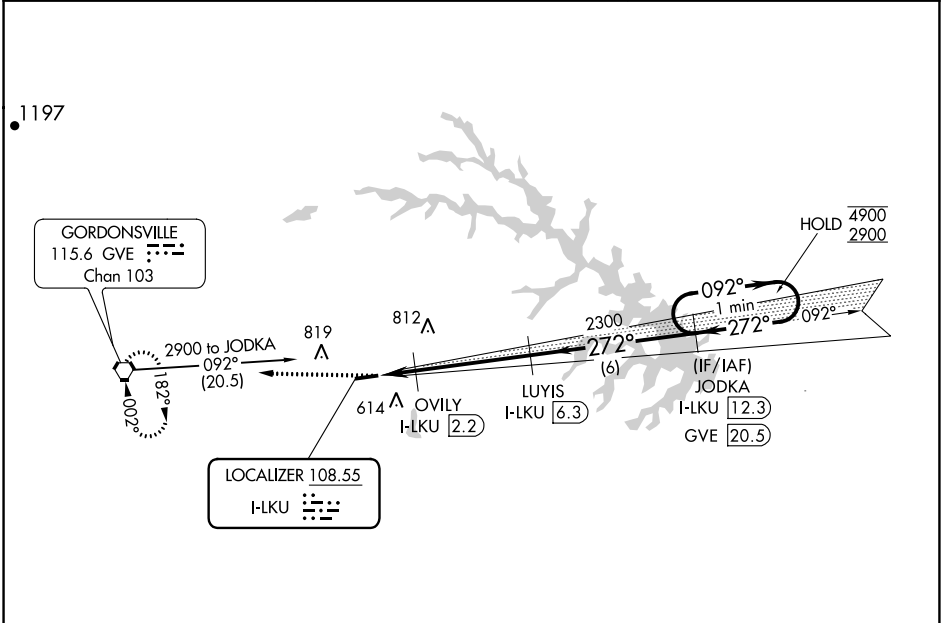
LOUISA COUNTY/FREEMAN FLD (LKU)

DME required.

▽ **▲** NA Circling NA north of Rwy 9-27. When local altimeter setting not received, use Orange altimeter setting and increase all MDA 40 feet. VDP NA when using Orange altimeter setting.

MISSED APPROACH:
Climb to 2900 direct
GVE VORTAC and hold.

AWOS-3 119.475	POTOMAC APP CON 132.85 323.125	UNICOM 122.975 (CTAF) 0
--------------------------	--	-----------------------------------



ELEV 494	TDZE 494				
0.9 NM	0.5 NM	4.2 NM	6 NM		
CATEGORY	A	B	C	D	
S-LOC 27	820-1 326 (400-1)		NA		
C CIRCLING	900-1 406 (500-1)	960-1 466 (500-1)	NA		

NE-3, 26 DEC 2024 to 23 JAN 2025

NE-3, 26 DEC 2024 to 23 JAN 2025