

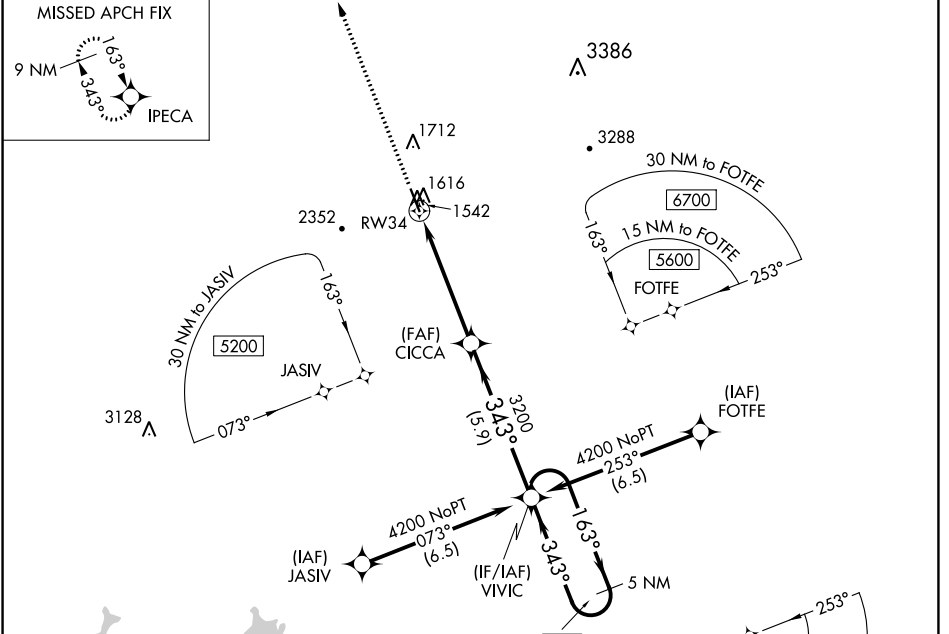
WAAS CH <b>77705</b> <b>W34A</b>	APP CRS <b>343°</b>	Rwy Idg TDZE <b>1535</b> Apt Elev <b>1535</b>
--	------------------------	---

# RNAV (GPS) RWY 34

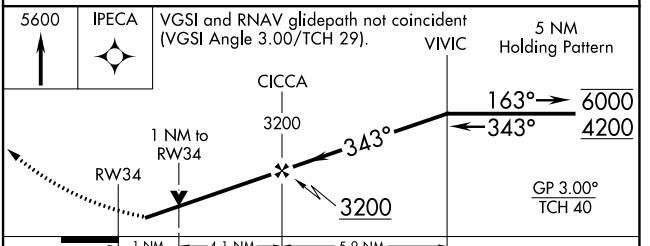
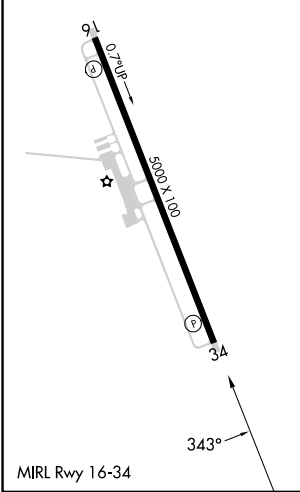
PICKENS COUNTY (JZP)

RNP APCH - GPS.		MISSED APPROACH: Climb to 5600 direct IPECA and hold, continue climb-in-hold to 5600.
Rwy 34 helicopter visibility reduction below 3/4 SM NA.		

AWOS-3PT <b>120.025</b>	ATLANTA CENTER <b>133.1 342.425</b>	UNICOM <b>122.725</b> (CTAF)
----------------------------	--	---------------------------------



ELEV 1535	TDZE 1535
-----------	-----------



CATEGORY	A	B	C	D
LPV DA	1789-7/8	254 (300-7/8)		NA
LNAV MDA	1880-1	345 (400-1)		NA
CIRCLING	2040-1	2380-1 1/4	2800-3	NA
	505 (600-1)	845 (900-1 1/4)	1265 (1300-3)	

SE-4, 26 DEC 2024 to 23 JAN 2025

SE-4, 26 DEC 2024 to 23 JAN 2025