

WAAS CH 87004	APP CRS 194°	Rwy Idg TDZE Apt Elev	6115 1065 1071
-------------------------	------------------------	-----------------------------	---

RNAV (GPS) RWY 19

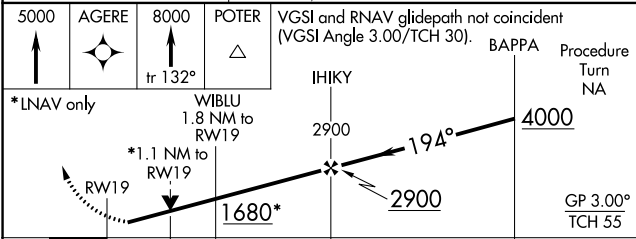
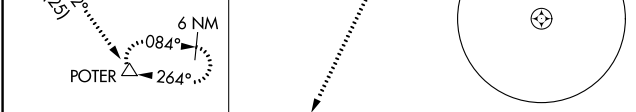
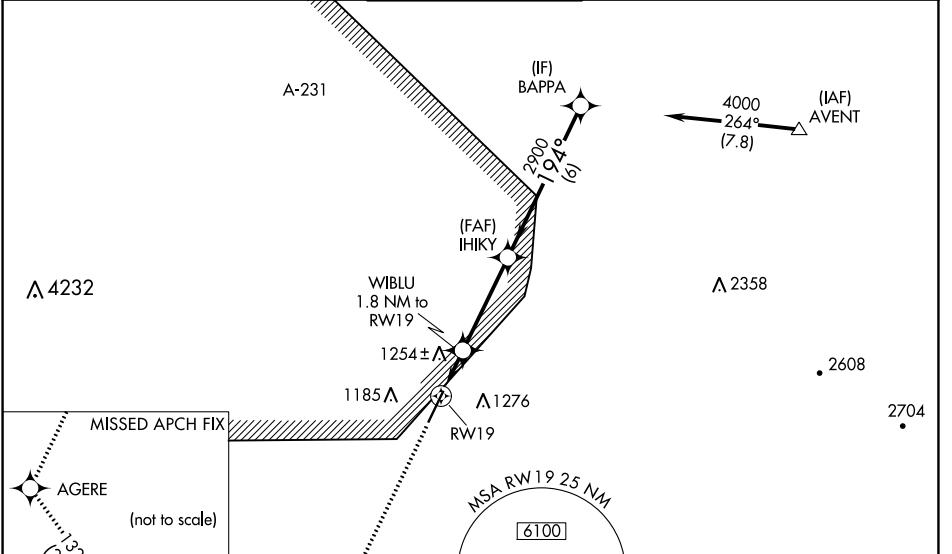
GLENDALE RGNL (GEU)

RNP APCH.

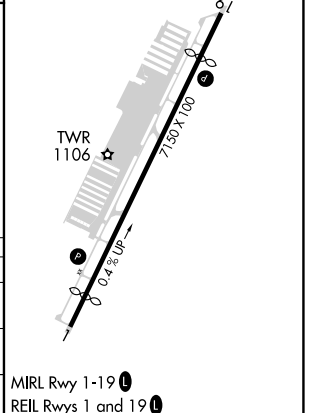
⚠ For uncompensated Baro-VNAV systems, LNAV/VNAV NA below -17°C or above 47°C.
⚠ Rwy 19 helicopter visibility reduction below 3/4 SM NA. VDP and Baro-VNAV NA when using Phoenix Sky Harbor Inrl altimeter setting. When local altimeter setting not received, use Phoenix Sky Harbor Inrl altimeter setting: increase LPV DA to 1384 feet; increase LNAV/VNAV DA to 1617 feet and all Cats visibility 1/4 SM; increase all MDA 60 feet and LNAV Cat C and D visibility 1/4 SM.

MISSED APPROACH: Climb to 5000 direct AGERE then climb to 8000 on track 132° to POTER and hold.

ATIS 119.425	LUKE APP CON* 118.15 363.125	GLENDALE TOWER* 121.0 (CTAF) 0	GND CON 118.0	UNICOM 122.95
------------------------	--	--	-------------------------	-------------------------



ELEV 1071	D TDZE 1065
-----------	--------------------



CATEGORY	A	B	C	D
LPV DA	1339-1		274 (300-1)	
LNAV/VNAV DA	1572-1 3/4		507 (600-1 3/4)	
LNAV MDA	1540-1 475 (500-1)		1540-1 3/8 475 (500-1 3/8)	1540-1 1/2 475 (500-1 1/2)

MRL Rwy 1-19 **0**
 REIL Rws 1 and 19 **0**

SW-4, 26 DEC 2024 to 23 JAN 2025

SW-4, 26 DEC 2024 to 23 JAN 2025