

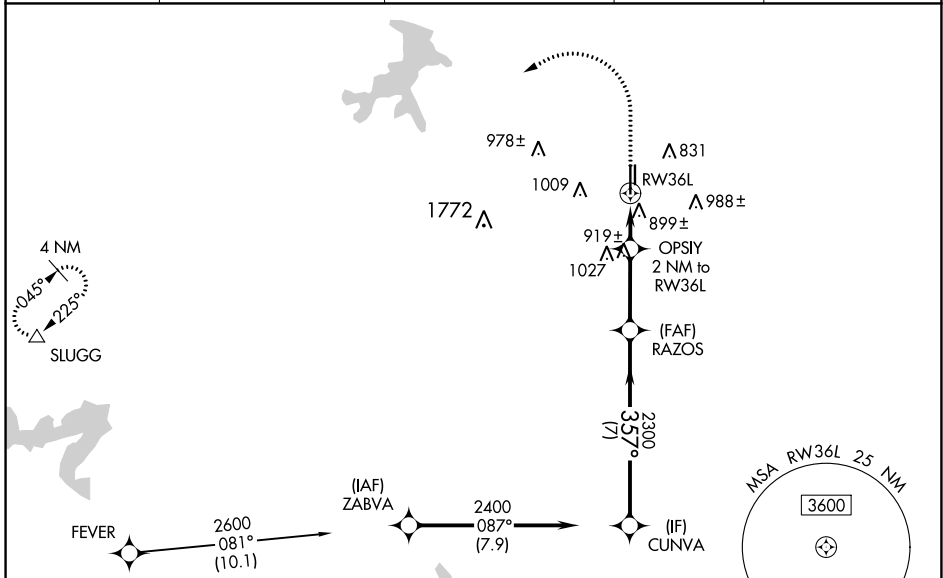
WAAS CH <b>57999</b> <b>W36A</b>	APP CRS <b>357°</b>	Rwy Idg TDZE Apt Elev	<b>6002</b> <b>697</b> <b>700</b>
--	------------------------	-----------------------------	---

# RNAV (GPS) RWY 36L

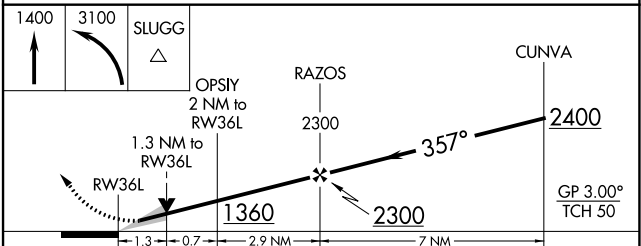
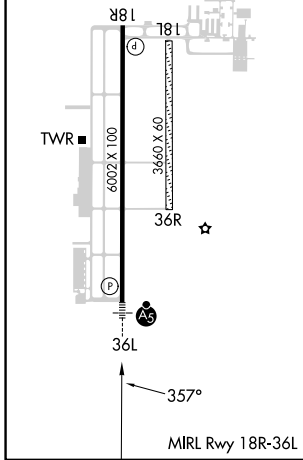
FORT WORTH SPINKS (FWS)

RNP APCH - GPS.		MALSR	MISSED APPROACH: Climb to 1400 then climbing left turn to 3100 direct SLUGG and hold.
<p>⚠ Circling NA west of Rwy 18R-36L. For uncompensated Baro-VNAV systems, LNAV/VNAV NA below -16°C or above 54°C. For inop ALS, increase LNAV/VNAV all Cats visibility to 1½ SM and increase LNAV Cats C/D visibility to 1¾ SM.</p>			

ATIS <b>120.025</b>	LONE STAR APP CON <b>135.975 379.9</b>	SPINKS TOWER ★ <b>124.625</b> (CTAF)	GND CON <b>119.475</b>	UNICOM <b>122.7</b>
------------------------	---	---	---------------------------	------------------------



ELEV 700	TDZE 697
----------	----------



	A	B	C	D
CATEGORY	A	B	C	D
LPV DA	DA	897-½	200 (200-½)	
LNAV/VNAV DA	DA	1193-1	496 (500-1)	
LNAV MDA	1160-½	463 (500-½)	1160-1	463 (500-1)
CIRCLING	1200-1	500 (500-1)	1340-1¾ 640 (700-1¾)	1340-2 640 (700-2)

SC-2, 26 DEC 2024 to 23 JAN 2025

SC-2, 26 DEC 2024 to 23 JAN 2025