

# KUSSO ONE DEPARTURE (RNAV)

FORT WORTH, TEXAS

SC-2, 26 DEC 2024 to 23 JAN 2025

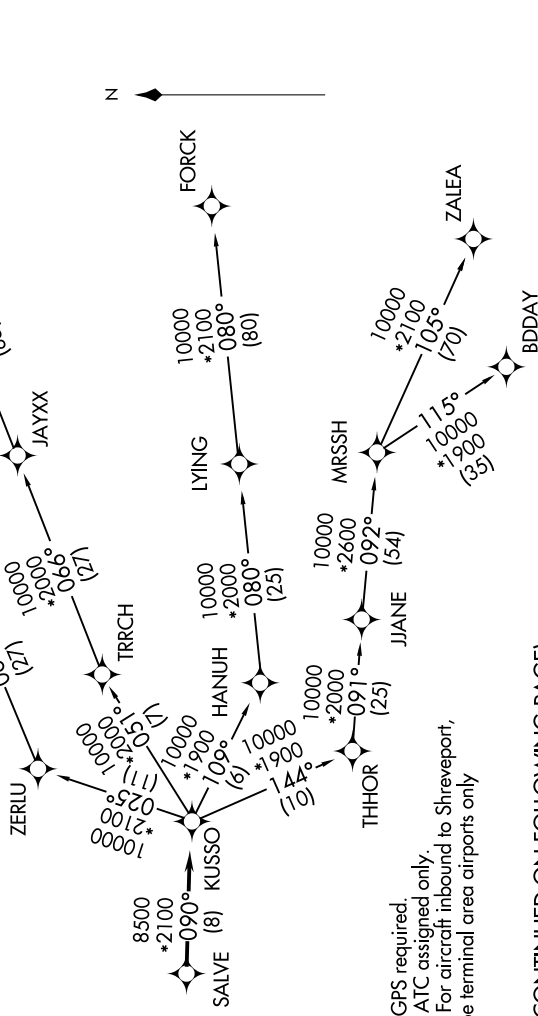
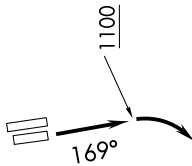
**TOP ALTITUDE:  
ASSIGNED BY ATC**

### TAKEOFF MINIMUMS

Rwys 16L/R: 300-2 $\frac{1}{4}$  or standard with minimum climb of 220' per NM to 1100, or alternatively, with standard takeoff minimums and a normal 200' per NM climb gradient, takeoff must occur no later than 1900' prior to DER.

Rwys 34L/R: Standard.

- LONE STAR DEP CON 118.1 306.95
- ATIS 126.925
- CINC DEL 128.725
- GND CON 132.65 306.2
- ALLIANCE TOWER 135.15 257.9



- NOTE: RADAR required.
- NOTE: RNAV 1.
- NOTE: DME/DME/IRU or GPS required.
- NOTE: BDDAY Transition: ATC assigned only.
- NOTE: MRSSH Transition: For aircraft inbound to Shreveport, Jackson and Monroe terminal area airports only

(CONTINUED ON FOLLOWING PAGE)

NOTE: Chart not to scale.

SC-2, 26 DEC 2024 to 23 JAN 2025

# KUSSO ONE DEPARTURE (RNAV)

(KUSSO1.KUSSO) 24MAR22

PEROT FLD/FORT WORTH ALLIANCE (A.F.W)

FORT WORTH, TEXAS