

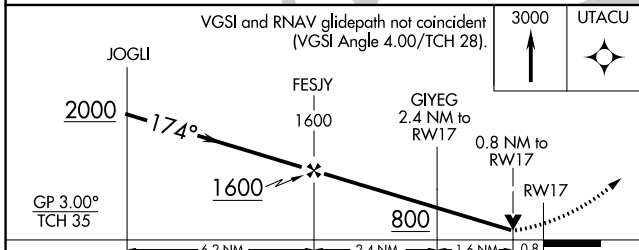
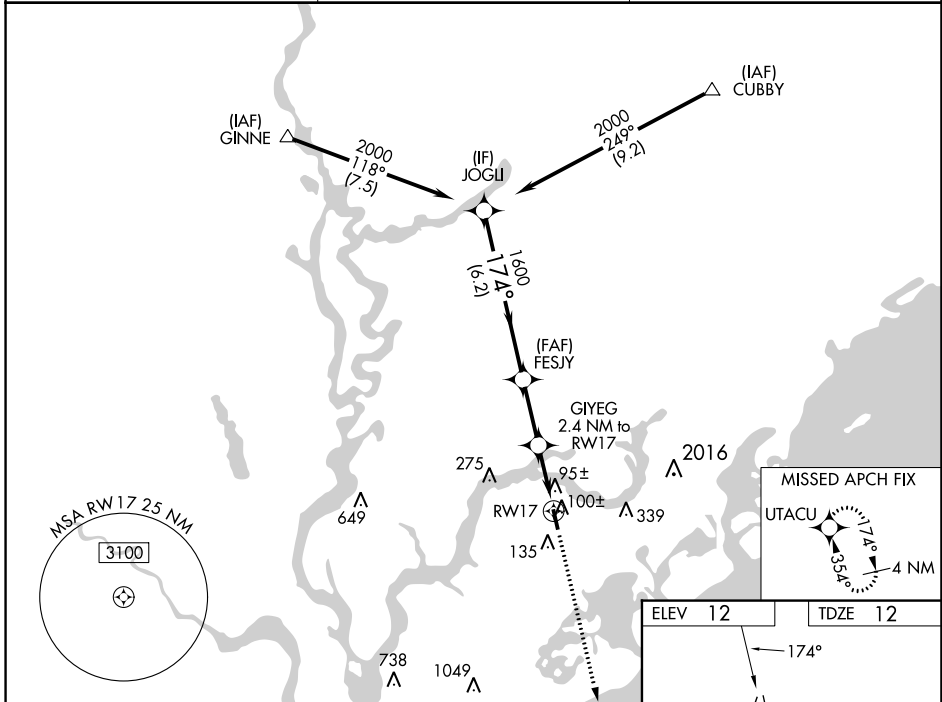
WAAS CH 62817 W17A	APP CRS 174°	Rwy Idg 3700 TDZE 12 Apt Elev 12
--	------------------------	---

RNAV (GPS) RWY 17

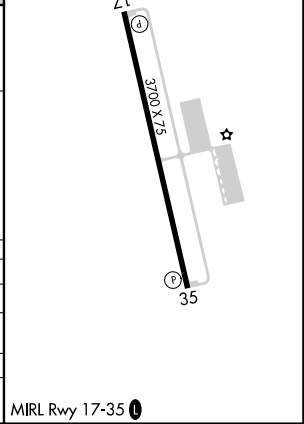
MT PLEASANT RGNL-FAISON FLD (L.R.O)

RNP APCH - GPS.		MISSED APPROACH: Climb to 3000 direct UTACU and hold, continue climb-in-hold to 3000.
<p>⚠ For uncompensated Baro-VNAV systems, LNAV/VNAV NA below -15°C or above 54°C. Rwy 17 helicopter visibility reduction below 3/4 SM NA.</p>		

AWOS-3 118.625	CHARLESTON APP CON 121.275 379.925	UNICOM 122.7 (CTAF) 0
--------------------------	--	---------------------------------



ELEV 12	TDZE 12
---------	---------



CATEGORY	A	B	C	D
LPV DA	307-1	295 (300-1)		NA
LNAV/VNAV DA	389-1 1/4	377 (400-1 1/4)		NA
LNAV MDA	360-1	348 (400-1)		NA
CIRCLING	460-1	520-1	700-1 3/4	NA
	448 (500-1)	508 (600-1)	688 (700-1 3/4)	

MRL Rwy 17-35 0

SE-2, 26 DEC 2024 to 23 JAN 2025

SE-2, 26 DEC 2024 to 23 JAN 2025