

WAAS CH 99740 W19A	APP CRS 187°	Rwy Idg TDZE Apt Elev	6201 1303 1303
---------------------------------	------------------------	-----------------------------	---

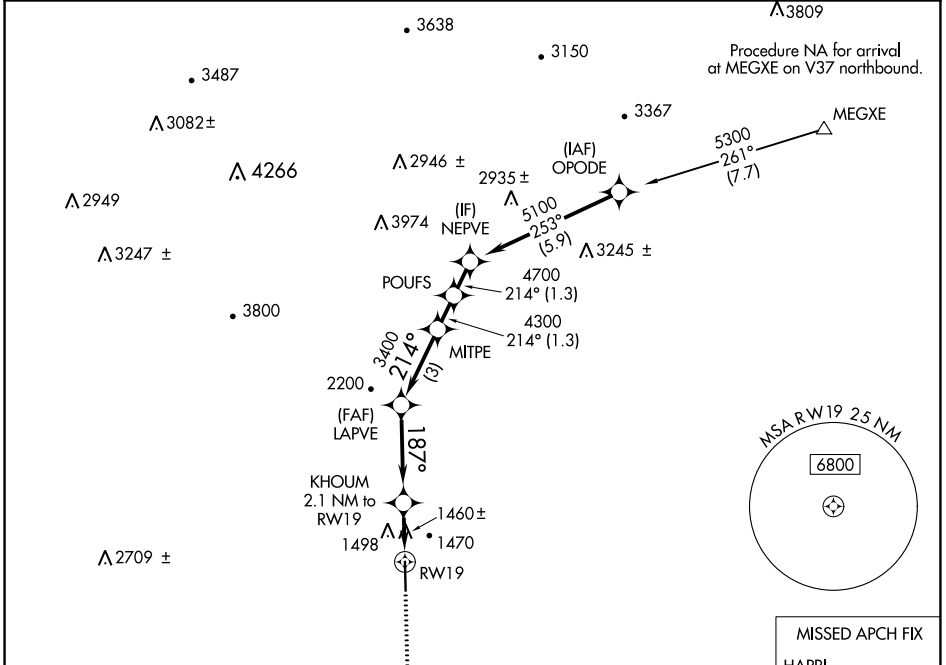
RNAV (GPS) RWY 19

WILKES COUNTY (UKF)

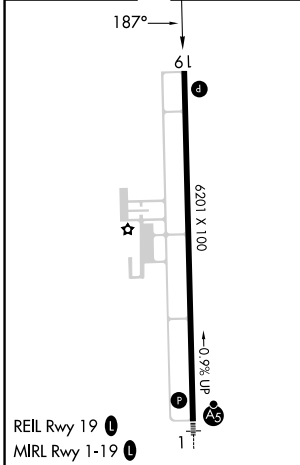
⚠ DME/DME RNP-0.3 NA. VDP NA when using Hickory altimeter setting. When local altimeter setting not received, use Hickory altimeter setting and increase all MDAs 100 feet and LP and LNAV visibility Cats C/D ¼ SM and increase Circling visibility Cat C ½ SM. Rwy 19 helicopter visibility reduction below ¾ SM NA.

MISSED APPROACH: Climb to 5000 direct HAPRI and hold, continue climb-in-hold to 5000.

AWOS-3 126.625	ATLANTA CENTER 125.15 263.0	UNICOM 122.7 (CTAF) 0
--------------------------	---------------------------------------	---------------------------------



ELEV 1303	TDZE 1303
------------------	------------------



5000 HAPRI ↑ VGS1 and descent angles not coincident (VGS1 Angle 3.00/TCH 47). KHOUM 2.1 NM to RW19 RW19 1.2 NM to RW19 187° 2100 1.2 0.9 3.5 NM 3 NM 1.3 NM 1.3 NM	VGS1 and descent angles not coincident (VGS1 Angle 3.00/TCH 47). KHOUM 2.1 NM to RW19 RW19 1.2 NM to RW19 187° 2100 1.2 0.9 3.5 NM 3 NM 1.3 NM 1.3 NM	MITPE 4300 3400	POUFS 4700 214°	NEPVE 5100

SE-2, 26 DEC 2024 to 23 JAN 2025

SE-2, 26 DEC 2024 to 23 JAN 2025