

VOR/DME FAY	APP CRS	Rwy Idg	5006
114.85	152°	TDZE	132
Chan 95(Y)		Apt Elev	132

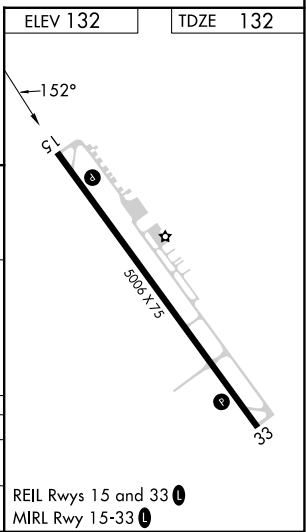
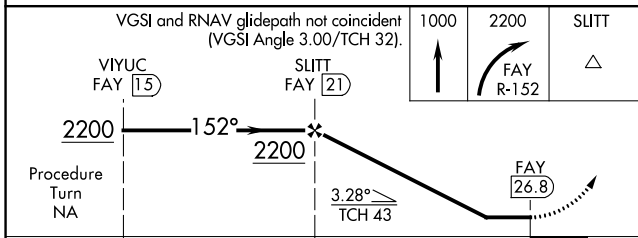
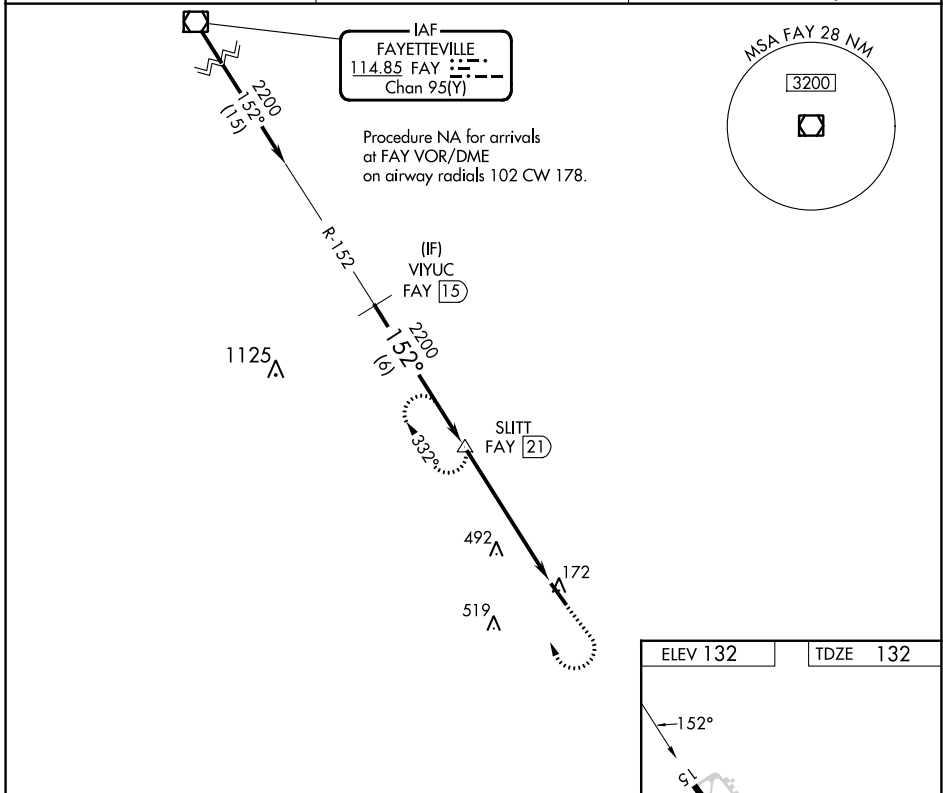
VOR/DME RWY 15

CURTIS L BROWN JR FLD (EYF)

⚠ Visibility reduction by helicopters NA. When local altimeter setting not received, use Fayetteville altimeter setting; increase all MDA 80 feet and increase S-15 Cats C and D and Circling Cat C and D visibility ¼ SM.

⚠ MISSED APPROACH: Climb to 1000 then climbing right turn to 2200 on FAY R-152 to SLITT/21 DME and hold.

AWOS-3P 119.475	FAYETTEVILLE APP CON 133.0 290.25	UNICOM 122.8 (CTAF)
---------------------------	---	-------------------------------



CATEGORY	A	B	C	D
S-15	760-1 628 (700-1)	760-1¼ 628 (700-1¼)	760-1¾ 628 (700-1¾)	760-2 628 (700-2)
CIRCLING	760-1 628 (700-1)	760-1¼ 628 (700-1¼)	880-2¼ 748 (800-2¼)	880-2½ 748 (800-2½)

SE-2, 26 DEC 2024 to 23 JAN 2025

SE-2, 26 DEC 2024 to 23 JAN 2025