

WAAS CH 40325 W36A	APP CRS 358°	Rwy Idg 3807 TDZE 280 Apt Elev 282
--	------------------------	---

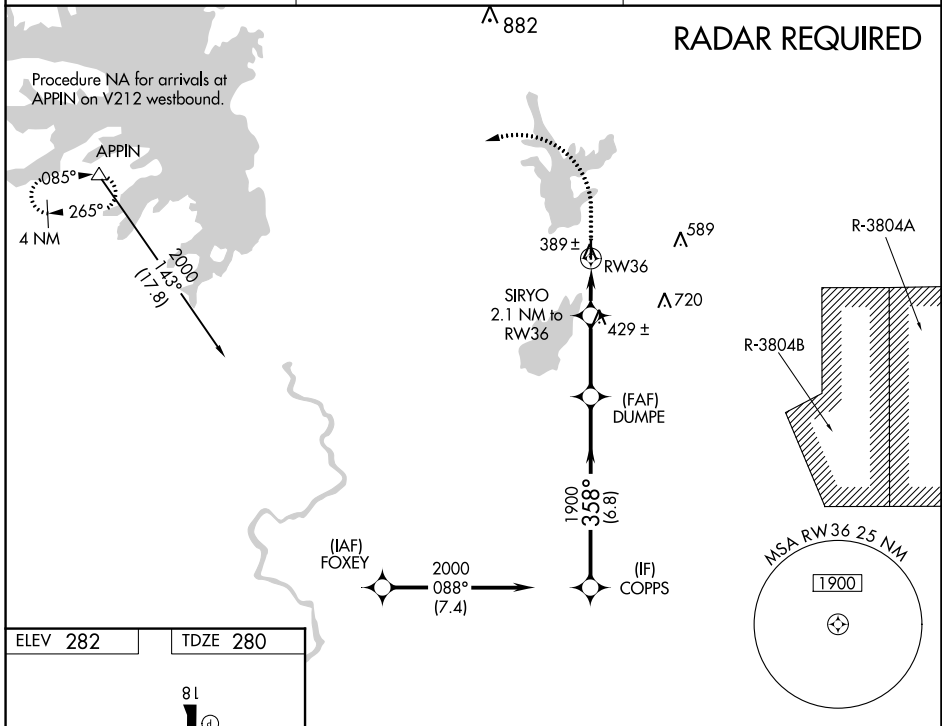
RNAV (GPS) RWY 36

LEESVILLE (L39)

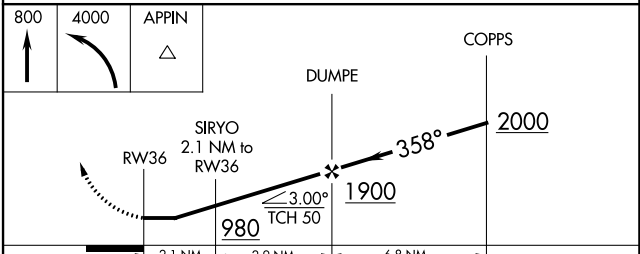
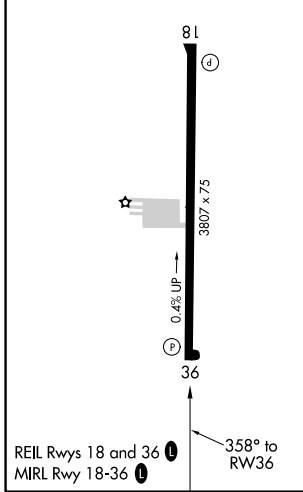
⚠ When VGSI inop, Straight-in/Circling Rwy 36 procedure NA at night. DME/DME NA RNP-0.3 NA. Visibility reduction by helicopters NA. Use Fort Polk altimeter setting; when not received, use De Ridder altimeter setting and increase all MDA 40 feet, increase LP Cat C visibility $\frac{1}{8}$ SM, and Circling Cat C visibility $\frac{1}{4}$ SM.

MISSED APPROACH: Climb to 800 then climbing left turn to 4000 direct APPIN and hold.

KPOE ATIS 134.85 282.2	POLK APP CON 123.7 261.3	UNICOM 122.8 (CTAF) 📻
----------------------------------	------------------------------------	--



ELEV 282	TDZE 280
----------	----------



CATEGORY	A	B	C	D
LP MDA	680-1	400 (400-1)	680-1 $\frac{1}{8}$ 400 (400-1 $\frac{1}{8}$)	NA
LNAV MDA	720-1	440 (500-1)	720-1 $\frac{3}{8}$ 440 (500-1 $\frac{3}{8}$)	NA
CIRCLING	760-1 478 (500-1)	800-1 518 (600-1)	1000-2 718 (800-2)	NA

SC-4, 26 DEC 2024 to 23 JAN 2025

SC-4, 26 DEC 2024 to 23 JAN 2025