

WAAS CH 99746 W31A	APP CRS 331°	Rwy Idg TDZE Apt Elev	5600 4230 4234
--	------------------------	-----------------------------	---

RNAV (GPS) RWY 31

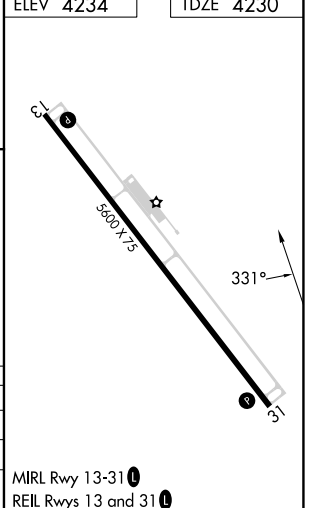
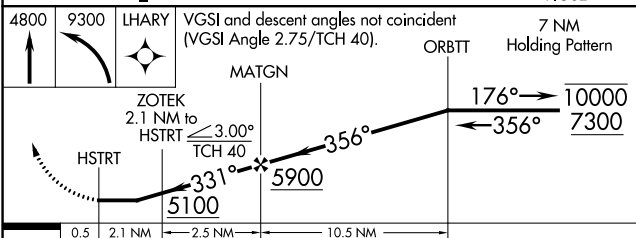
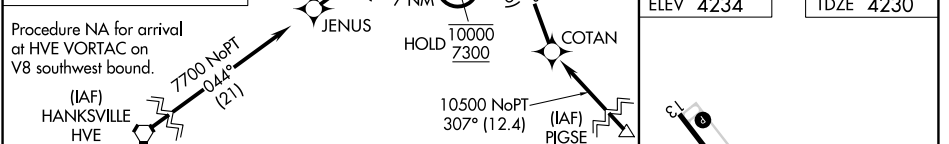
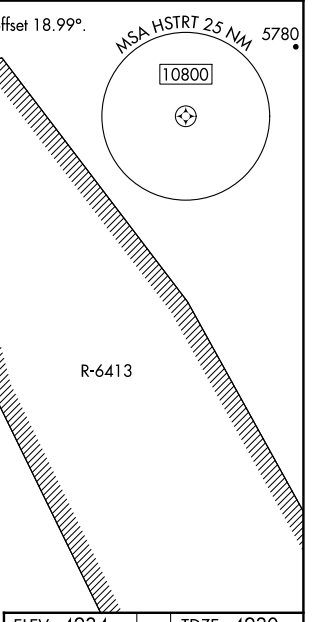
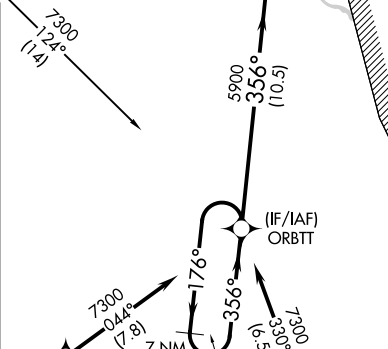
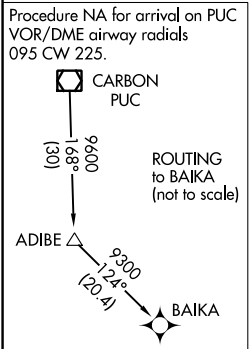
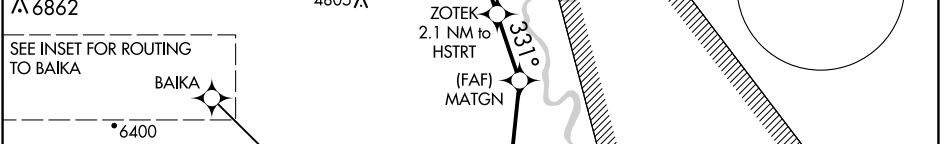
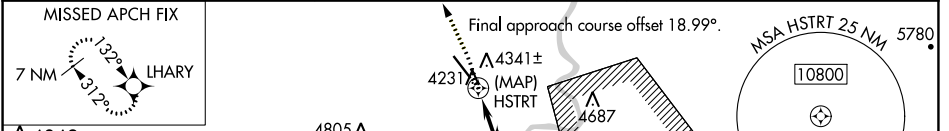
GREEN RIVER MUNI (U34)

RNP APCH - GPS.

NA Rwy 31 helicopter visibility reduction below 3/4 SM NA. Use Moab altimeter setting; when not received, use Hanksville altimeter setting and increase all MDAs 20 feet and LP visibility Cat C/D 1/2 SM, and Circling visibility Cat D 1/2 SM. Circling NA for Cats C and D northeast of Rwy 13-31.

MISSED APPROACH: Climb to 4800, then climbing left turn to 9300 direct LHARY and hold, continue climb-in-hold to 9300.

CNY ASOS 118.525	SALT LAKE CENTER 133.6 269.25	UNICOM 122.8 (CTAF)
----------------------------	---	-------------------------------



CATEGORY	A	B	C	D
LP MDA	4640-1	410 (500-1)	4640-1 1/8	410 (500-1 1/8)
LNAV MDA	4700-1	470 (500-1)	4700-1 3/8	470 (500-1 3/8)
CIRCLING	4800-1 566 (600-1)	4840-1 606 (700-1)	4840-1 3/4 606 (700-1 3/4)	5100-2 3/4 866 (900-2 3/4)

SW-4, 26 DEC 2024 to 23 JAN 2025

SW-4, 26 DEC 2024 to 23 JAN 2025