

# BAYLR SIX DEPARTURE (RNAV)

AL-9077 (FAA)

DENVER INTL (DEN)  
DENVER, COLORADO

SW-1, 26 DEC 2024 to 23 JAN 2025

## TOP ALTITUDE: FL230

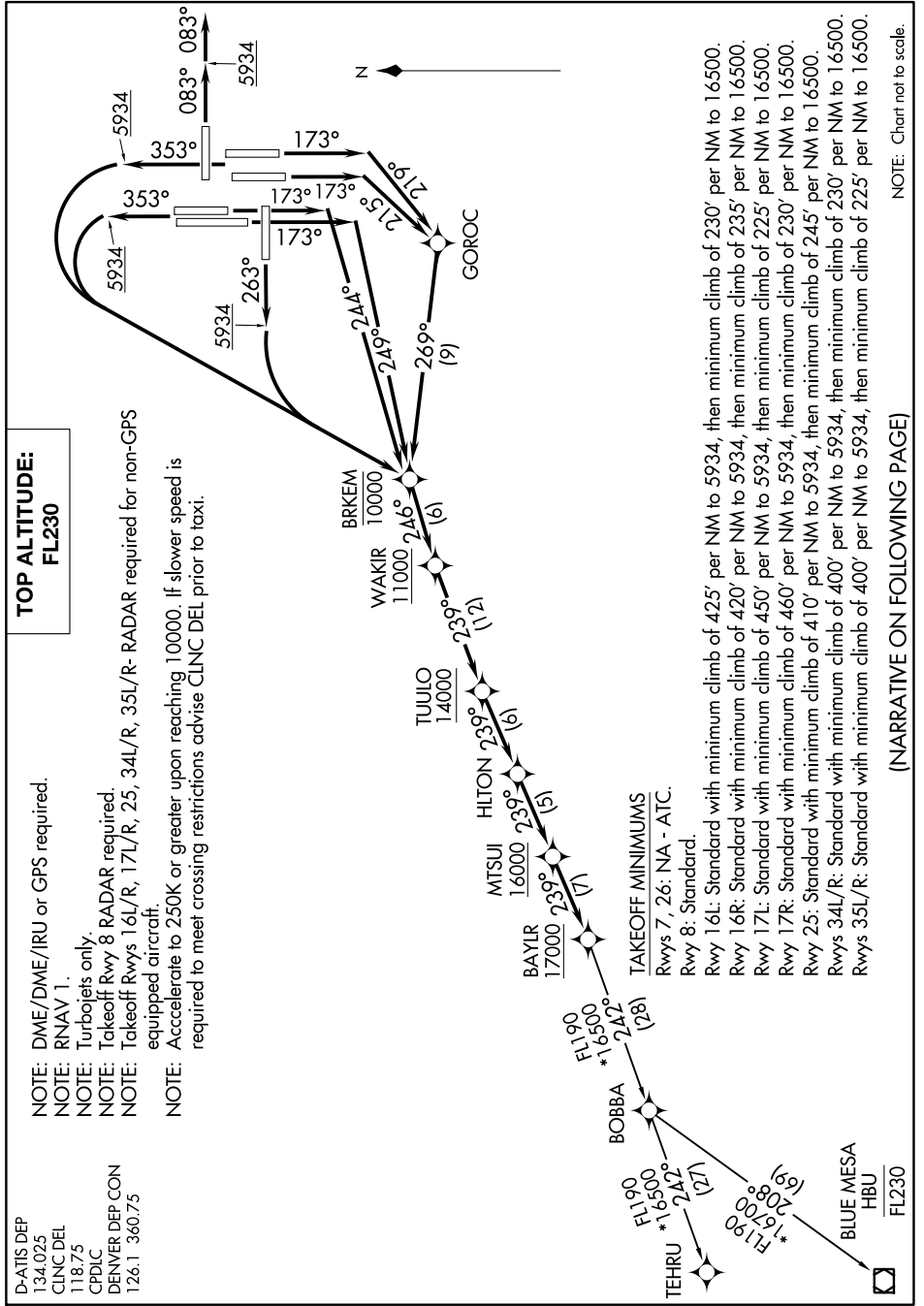
- NOTE: DME/DME/IRU or GPS required.
- NOTE: RNAV 1.
- NOTE: Turbojets only.
- NOTE: Takeoff Rwy 8 RADAR required.
- NOTE: Takeoff Rwys 16L/R, 17L/R, 25, 34L/R, 35L/R- RADAR required for non-GPS equipped aircraft.
- NOTE: Accelerate to 250K or greater upon reaching 10000. If slower speed is required to meet crossing restrictions advise CLNC DEL prior to taxi.

D-ATIS DEP  
134.025  
CLNC DEL  
118.75  
CPDLC  
DENVER DEP CON  
126.1 360.75

# BAYLR SIX DEPARTURE (RNAV)

(BAYLR6.BAYLR) 26MAR20

DENVER, COLORADO  
DENVER INTL (DEN)



(NARRATIVE ON FOLLOWING PAGE)

SW-1, 26 DEC 2024 to 23 JAN 2025