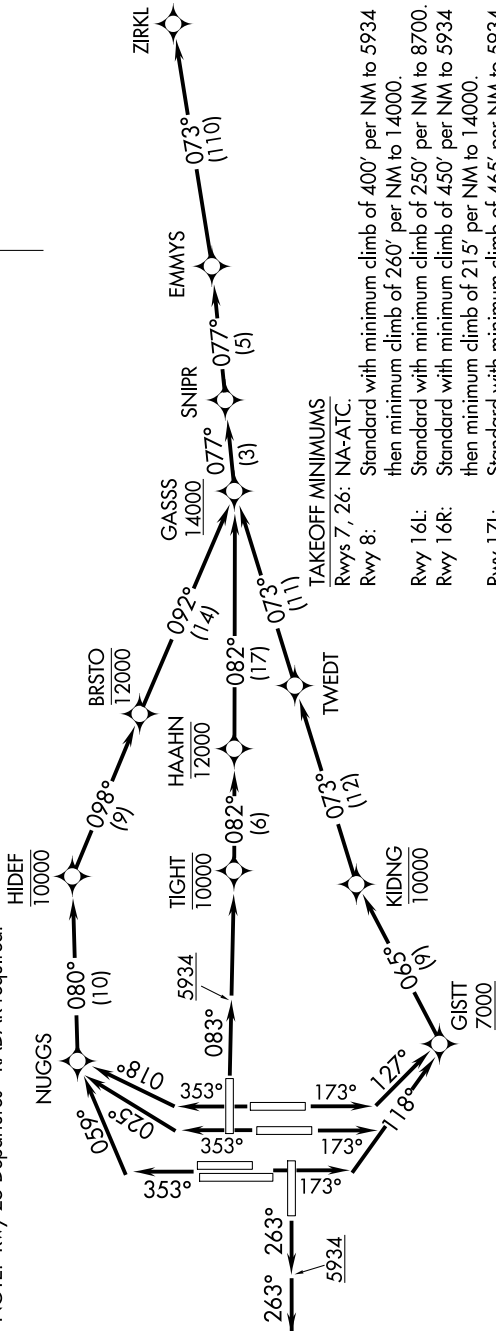


SW-1, 26 DEC 2024 to 23 JAN 2025

- NOTE: DME/DME/IRU or GPS required.
- NOTE: RNAV 1.
- NOTE: Turboprops only.
- NOTE: Takeoff Rwy 16L/R, 17L/R, 34L/R, 35L/R - RADAR required for non-GPS equipped aircraft.
- NOTE: Accelerate to 250K or greater upon reaching 10000. If slower speed is required to meet crossing restrictions advise CLNC DEL prior to taxi.
- NOTE: Rwy 25 Departures - RADAR required.

TOP ALTITUDE:
FL230

D-AIIS DEP
134.025
CLNC DEL
118.75
CPDLC
DENVER DEP CON
128.25 371.95



(NARRATIVE ON FOLLOWING PAGE)

NOTE: Chart not to scale.

SW-1, 26 DEC 2024 to 23 JAN 2025