

# EXTAN SEVEN DEPARTURE (RNAV)

AL-9077 (FAA)

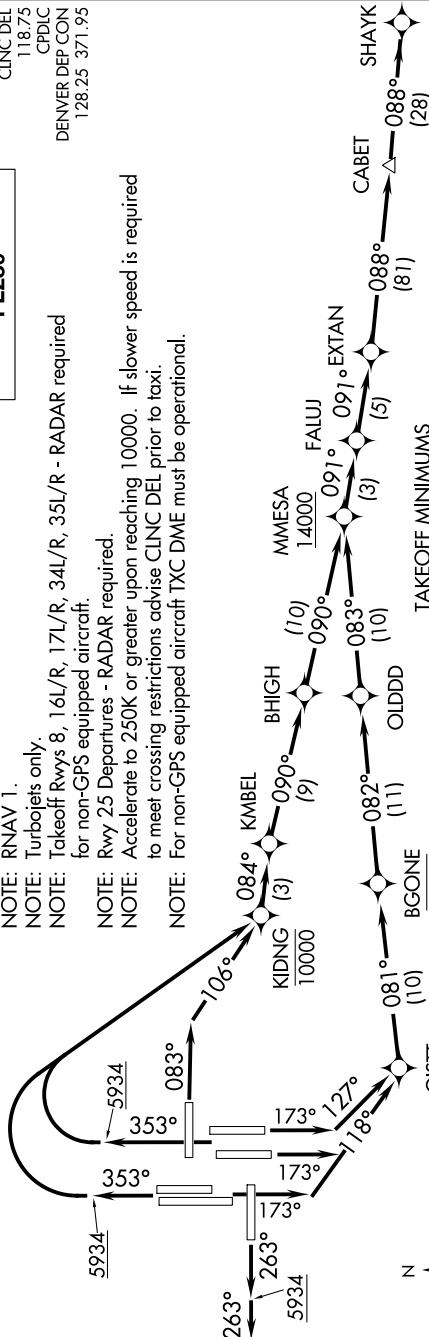
DENVER INTL (DEN)

DENVER, COLORADO

D-ATIS DEP  
134.025  
CLINC DEL  
118.75  
CPDIC  
DENVER DEP CON  
128.25 371.95

**TOP ALTITUDE:  
FL230**

- NOTE: DME/DME/IRU or GPS required.  
 NOTE: RNAV 1.  
 NOTE: Turbojets only.  
 NOTE: Takeoff Rwy 8, 16L/R, 17L/R, 34L/R, 35L/R - RADAR required for non-GPS equipped aircraft.  
 NOTE: Rwy 25 Departures - RADAR required.  
 NOTE: Accelerate to 250K or greater upon reaching 10000. If slower speed is required to meet crossing restrictions advise CLINC DEL prior to taxi.  
 NOTE: For non-GPS equipped aircraft TXC DME must be operational.



**TAKEOFF MINIMUMS**

- Rwys 7, 26: NA-ATC.  
 Rwy 8: Standard with minimum climb of 500' per NM to 5934 then minimum climb of 260' per NM to 14000.  
 Rwy 16L: Standard with minimum climb of 245' per NM to 14000.  
 Rwy 16R: Standard with minimum climb of 450' per NM to 5934 then minimum climb of 225' per NM to 14000.  
 Rwy 17L: Standard with minimum climb of 465' per NM to 5934 then minimum climb of 280' per NM to 14000.  
 Rwy 17R: Standard with minimum climb of 465' per NM to 5934 then minimum climb of 250' per NM to 14000.  
 Rwy 25: Standard with minimum climb of 400' per NM to 5934.  
 Rwy 34L: Standard with minimum climb of 500' per NM to 5934 then minimum climb of 220' per NM to 14000.  
 Rwy 34R: Standard with minimum climb of 500' per NM to 5934 then minimum climb of 230' per NM to 14000.  
 Rwys 35L/R: Standard with minimum climb of 500' per NM to 5934 then minimum climb of 240' per NM to 14000.

(NARRATIVE ON FOLLOWING PAGE)

NOTE: Chart not to scale.

# EXTAN SEVEN DEPARTURE (RNAV)