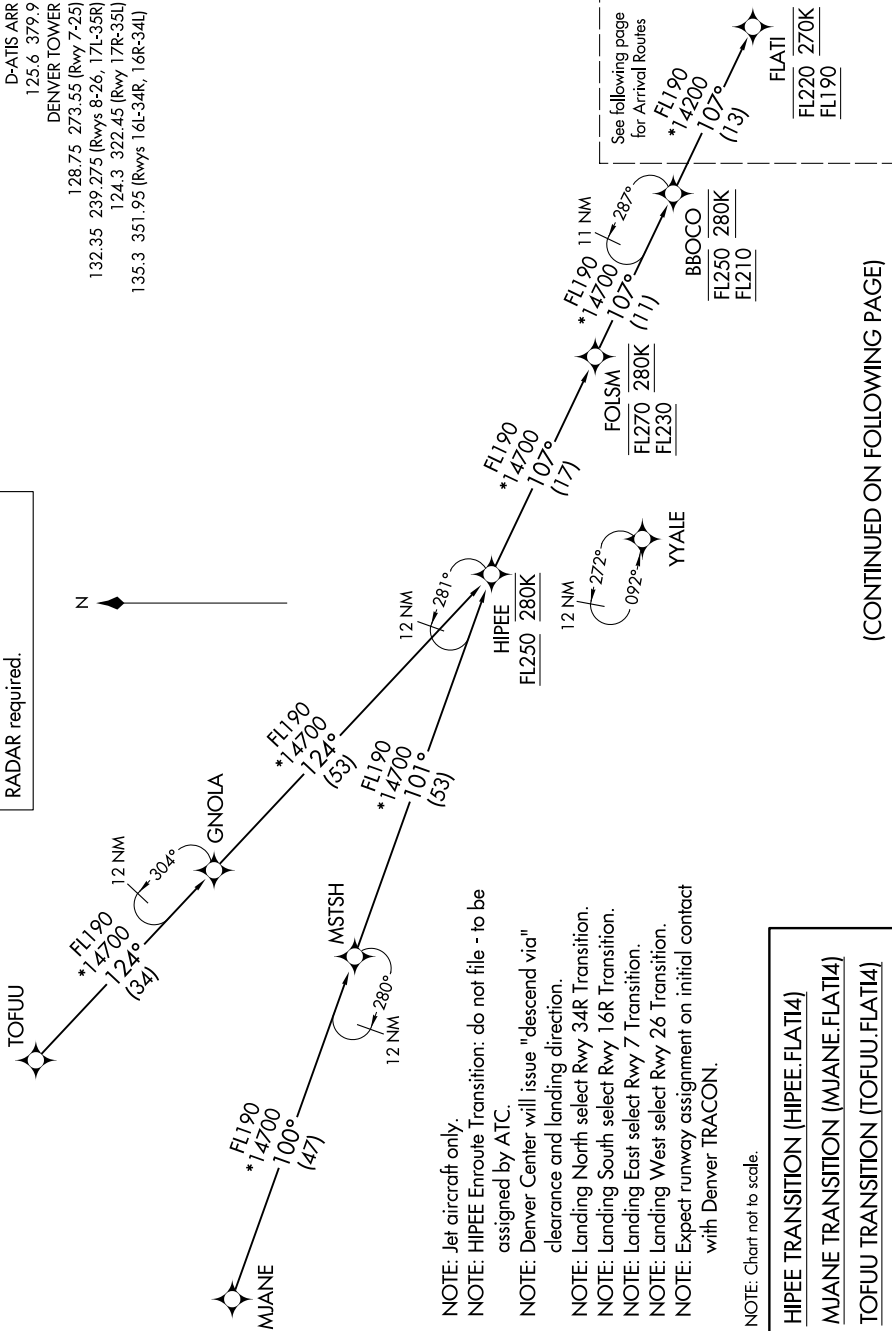


# FLATI FOUR ARRIVAL (RNAV) Transition Routes

DENVER APP CON  
119.3 307.3  
D-ATIS ARR  
125.6 379.9  
DENVER TOWER  
128.75 273.55 (Rwy 7-25)  
132.35 239.275 (Rwys 8-26, 17L-35R)  
124.3 322.45 (Rwy 17R-35L)  
135.3 351.95 (Rwys 16L-34R, 16R-34L)

RNAV 1 - DME/DME/IRU or GPS.  
RADAR required.

SW-1, 26 DEC 2024 to 23 JAN 2025



- NOTE: Jet aircraft only.
- NOTE: HIPEE Enroute Transition: do not file - to be assigned by ATC.
- NOTE: Denver Center will issue "descend via" clearance and landing direction.
- NOTE: Landing North select Rwy 34R Transition.
- NOTE: Landing South select Rwy 16R Transition.
- NOTE: Landing East select Rwy 7 Transition.
- NOTE: Landing West select Rwy 26 Transition.
- NOTE: Expect runway assignment on initial contact with Denver TRACON.

NOTE: Chart not to scale.

HIPEE TRANSITION (HIPEE.FLATI4)  
MJANE TRANSITION (MJANE.FLATI4)  
TOFUU TRANSITION (TOFUU.FLATI4)

(CONTINUED ON FOLLOWING PAGE)

SW-1, 26 DEC 2024 to 23 JAN 2025