


LOC/DME I-LTT 111.1 Chan 48	APP CRS 173°	Rwy Idg TDZE Apt Elev	12000 5357 5434
--	------------------------	-----------------------------	--

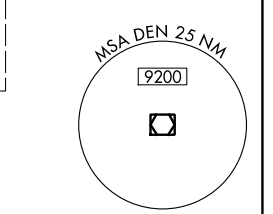
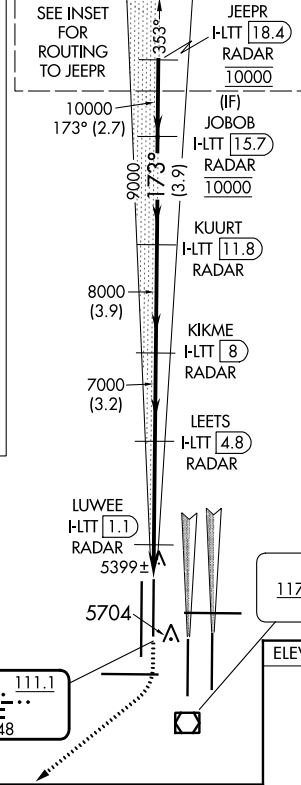
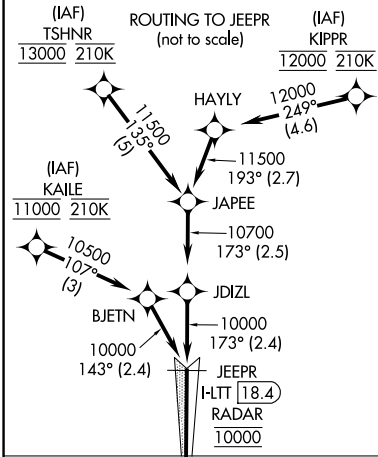
ILS or LOC RWY 16L

DENVER INTL (DEN)

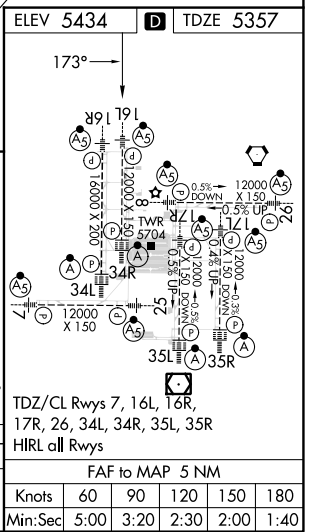
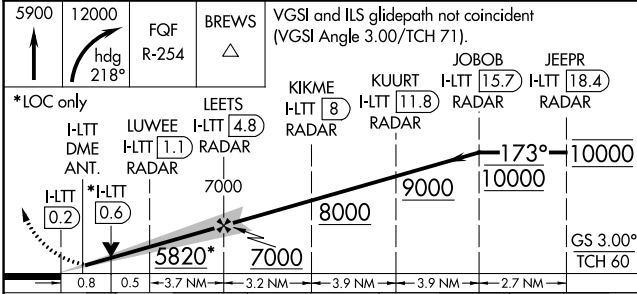
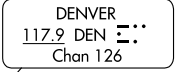
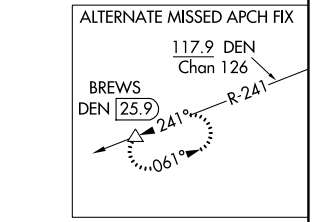
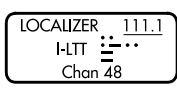
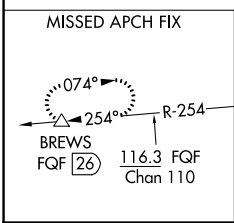
Simultaneous approach authorized with Rwy 17L/17R. DME required. S-LOC 16L DME or RADAR required. For inoperative MALSR, increase S-LOC Cat C/D visibility to RVR 4500.

MALS  MISSED APPROACH: Climb to 5900 then climbing right turn to 12000 on heading 218° and on FGF VORTAC R-254 to BREWS/FQG 26 DME and hold.

D-ATIS 125.6 379.9 (ARR) 134.025 (DEP)	DENVER APP CON 119.3 307.3 (N) 120.35 379.3 (S)	DENVER TOWER 135.3 351.95	GND CON 121.35 379.175 (W) 121.85 377.1 (E)	CLNC DEL 118.75	CPDLC
--	---	-------------------------------------	---	---------------------------	-------



RADAR or GPS REQUIRED



5900	12000	FGF R-254	BREWS △	VGSI and ILS glidepath not coincident (VGSI Angle 3.00/TCH 71).
*LOC only	LEETS I-LTT 4.8	KIKME I-LTT 8	KUURT I-LTT 11.8	JEEPR I-LTT 18.4
I-LTT DME ANT.	LWEE I-LTT 1.1	RADAR	RADAR	RADAR
I-LTT 0.2	*I-LTT 0.6	7000	8000	9000 10000
0.8	0.5	3.7 NM	3.2 NM	3.9 NM 3.9 NM 2.7 NM
CATEGORY	A	B	C	D
S-ILS 16L	5557/18 200 (200-½)			
S-LOC 16L	5660/24 303 (300-½)			

TDZ/CL Rwy 7, 16L, 16R, 17R, 26, 34L, 34R, 35L, 35R

HIRL all Rwys

FAF to MAP 5 NM

Knots	60	90	120	150	180
Min:Sec	5:00	3:20	2:30	2:00	1:40

SW-1, 26 DEC 2024 to 23 JAN 2025

SW-1, 26 DEC 2024 to 23 JAN 2025