

LOC/DME I-BXP 110.15 Chan 38 (Y)	APP CRS 173°	Rwy ldg 12000 TDZE 5339 Apt Elev 5434
---	------------------------	--

ILS or LOC RWY 17L

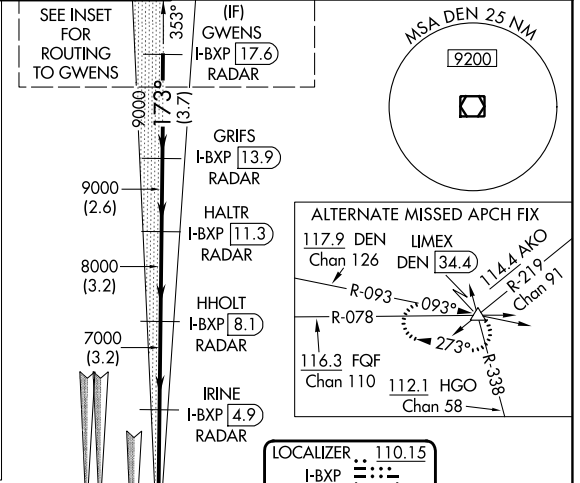
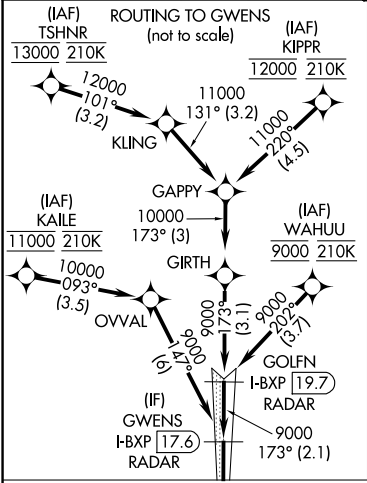
DENVER INTL (DEN)

▼ For inoperative MALSR, increase S-LOC Cats C/D visibility to RVR 4500. S-LOC 17L DME or RADAR required. Simultaneous approaches authorized with Rwy 17R and 16L/16R.
#RVR 1800 authorized with the use of FD or AP or HUD to DA.

MALSR

MISSED APPROACH: Climb to 5900 then climbing left turn to 10000 on heading 120° and FQF VORTAC R-078 to LIMEX INT/FQF 31.9 DME and hold.

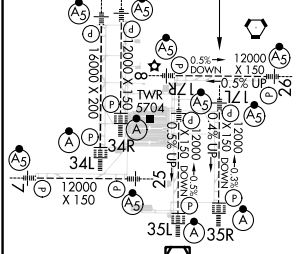
D-ATIS 125.6 379.9 (ARR) 134.025 (DEP)	DENVER APP CON 119.3 307.3 (N) 120.35 379.3 (S)	DENVER TOWER 132.35 239.275	GND CON 121.35 379.175 (W) 121.85 377.1 (E)	CLNC DEL 118.75	CPDLC
--	---	---------------------------------------	---	---------------------------	-------



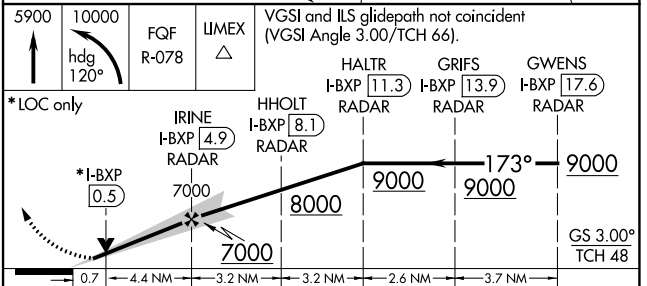
A 5824

DENVER 117.9 DEN Chan 126

ELEV 5434	D	TDZE 5339
-----------	----------	-----------



RADAR or GPS REQUIRED



CATEGORY	A	B	C	D
S-ILS 17L	# 5539/24 200 (200-½)			
S-LOC 17L	5620/24 281 (200-½)			

SW-1, 26 DEC 2024 to 23 JAN 2025

SW-1, 26 DEC 2024 to 23 JAN 2025