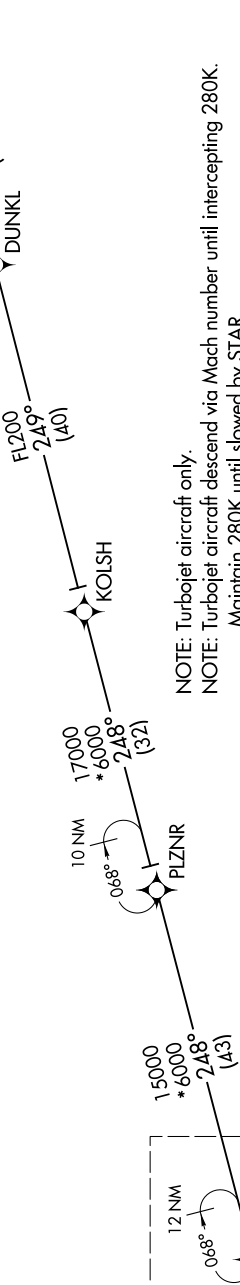
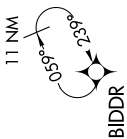


LAWGR THREE ARRIVAL (RNAV) Transition Routes

SW-1, 26 DEC 2024 to 23 JAN 2025

DENVER APP CON
124.95 346.4
D-ATIS ARR
125.6 379.9
DENVER TOWER
128.75 273.55 (Rwy 7-25)
132.35 239.275 (Rwys 8-26, 17L-35R)
124.3 322.45 (Rwy 17R-35L)
135.3 351.95 (Rwys 16L-34R, 16R-34L)



- NOTE: Turbojet aircraft only.
NOTE: Turbojet aircraft descend via Mach number until intercepting 280K. Maintain 280K until slowed by STAR.
NOTE: Denver Center will issue "descend via" clearance and landing direction.
NOTE: Landing north select Rwy 35R transition.
NOTE: Landing south select Rwy 17R transition.
NOTE: Landing east select Rwy 7 transition.
NOTE: Landing west select Rwy 26 transition.
NOTE: Expect runway assignment on initial contact with Denver TRACON.

12 NM
068°
LAWGR
FL220
FL190

See following page for arrival routes

BRWRY TRANSITION (BRWRY.LAWGR3)

(CONTINUED ON FOLLOWING PAGE)

NOTE: Chart not to scale.

LAWGR THREE ARRIVAL (RNAV) Transition Routes

SW-1, 26 DEC 2024 to 23 JAN 2025