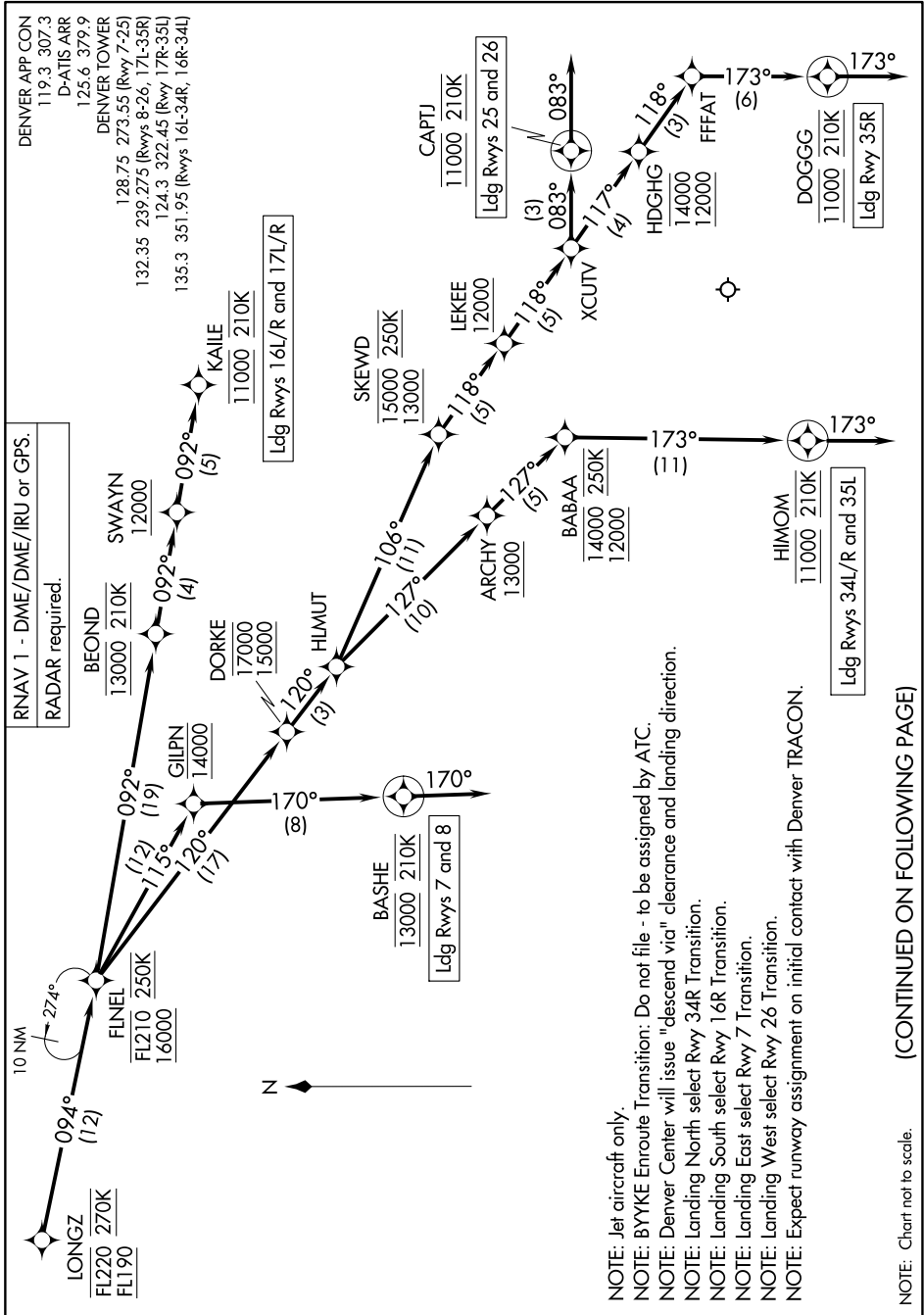


LONGZ THREE ARRIVAL (RNAV) Arrival Routes

SW-1-1, 26 DEC 2024 to 23 JAN 2025



LONGZ THREE ARRIVAL (RNAV) Arrival Routes

- NOTE: Jet aircraft only.
- NOTE: BYYKE Enroute Transition: Do not file - to be assigned by ATC.
- NOTE: Denver Center will issue "descend via" clearance and landing direction.
- NOTE: Landing North select Rwy 34R Transition.
- NOTE: Landing South select Rwy 16R Transition.
- NOTE: Landing East select Rwy 7 Transition.
- NOTE: Landing West select Rwy 26 Transition.
- NOTE: Expect runway assignment on initial contact with Denver TRACON.

(CONTINUED ON FOLLOWING PAGE)

NOTE: Chart not to scale.

SW-1, 26 DEC 2024 to 23 JAN 2025