

(N11XX.N11XX3) 23110

AL-9077 (FAA)

DENVER INTL (DEN)
DENVER, COLORADO

N11XX THREE ARRIVAL (RNAV) Transition Routes

RNAV 1 - DME/DME/IRU or GPS

RADAR required for non-GPS equipped aircraft

DENVER APP CON

126.55 269.525

D-ATIS ARR

125.6 379.9

DENVER TOWER

128.75 273.55 (Rwy 7-25)

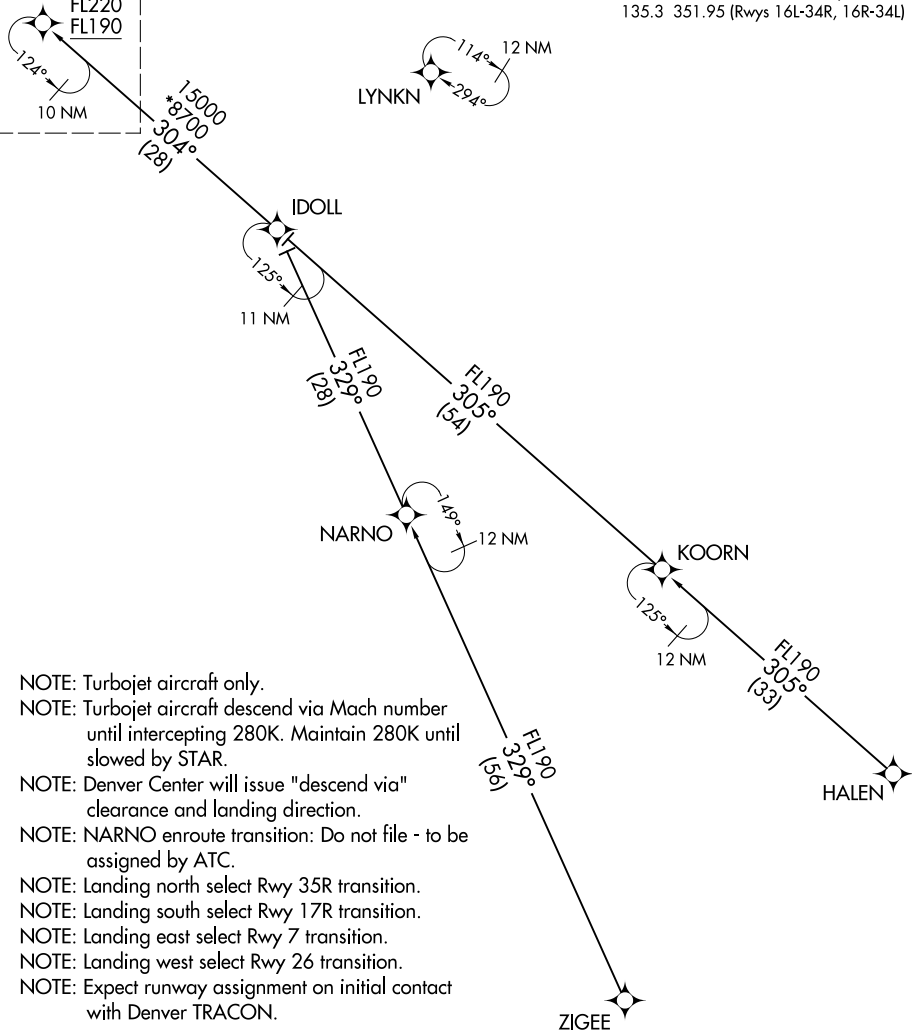
132.35 239.275 (Rwys 8-26, 17L-35R)

124.3 322.45 (Rwy 17R-35L)

135.3 351.95 (Rwys 16L-34R, 16R-34L)

See following page
for arrival routes

N11XX
FL220
FL190



NOTE: Turbojet aircraft only.

NOTE: Turbojet aircraft descend via Mach number until intercepting 280K. Maintain 280K until slowed by STAR.

NOTE: Denver Center will issue "descend via" clearance and landing direction.

NOTE: NARNO enroute transition: Do not file - to be assigned by ATC.

NOTE: Landing north select Rwy 35R transition.

NOTE: Landing south select Rwy 17R transition.

NOTE: Landing east select Rwy 7 transition.

NOTE: Landing west select Rwy 26 transition.

NOTE: Expect runway assignment on initial contact with Denver TRACON.

HALEN TRANSITION (HALEN.N11XX3)

NARNO TRANSITION (NARNO.N11XX3)

ZIGEE TRANSITION (ZIGEE.N11XX3)

(CONTINUED ON FOLLOWING PAGE)

NOTE: Chart not to scale.

N11XX THREE ARRIVAL (RNAV) Transition Routes

(N11XX.N11XX3) 07OCT21

DENVER, COLORADO
DENVER INTL (DEN)

SW-1, 26 DEC 2024 to 23 JAN 2025

SW-1, 26 DEC 2024 to 23 JAN 2025