

ROCKIES SIX DEPARTURE

AL-9077 (FAA)

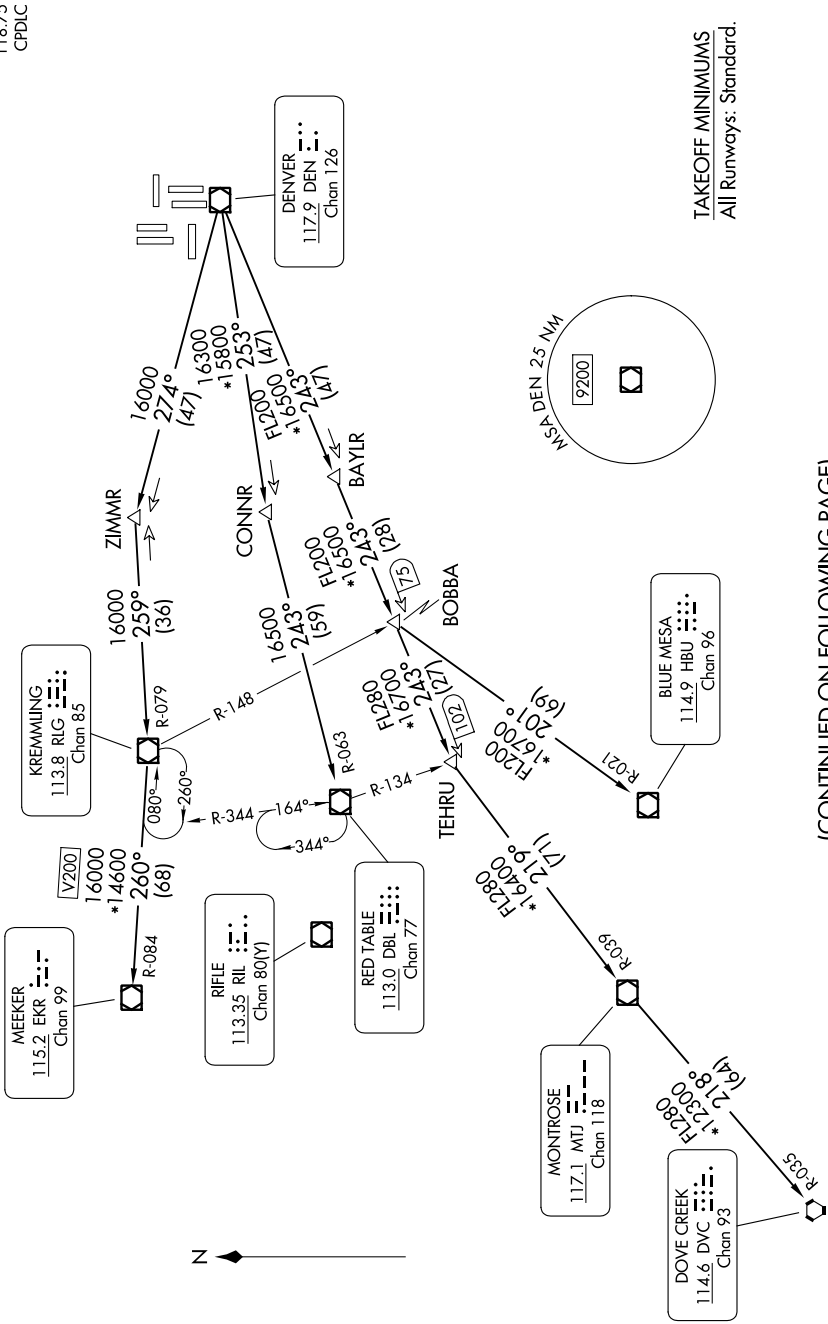
DENVER INTL (DEN)
DENVER, COLORADO

DENVER DEP CON
126.1 360.75
CLNCDEL
118.75
CPDLC

**TOP ALTITUDE:
10000**

RADAR required.

SW-1, 26 DEC 2024 to 23 JAN 2025



TAKEOFF MINIMUMS
All Runways: Standard.

NOTE: Chart not to scale.

(CONTINUED ON FOLLOWING PAGE)

SW-1, 26 DEC 2024 to 23 JAN 2025

ROCKIES SIX DEPARTURE

DENVER, COLORADO
DENVER INTL (DEN)