

APP CRS 173°	Rwy Idg 12000 TDZE 5392 Apt Elev 5434
------------------------	--

RNAV (RNP) Z RWY 17R

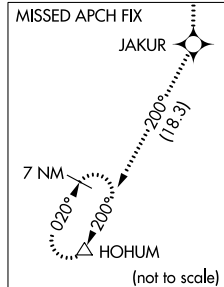
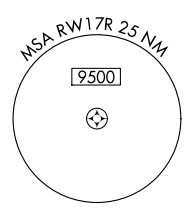
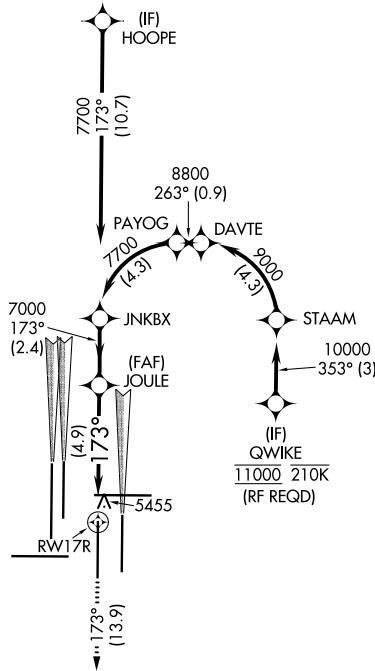
DENVER INTL (DEN)

<p>▽ GPS required. For inoperative MALSR, increase RNP 0.10 all Cats visibility to RVR 5000 and RNP 0.30 all Cats visibility to 1½ mile. Simultaneous approach authorized. Use of FD or AP providing RNAV track guidance required during simultaneous operations. For uncompensated Baro-VNAV systems, procedure NA below -25°C (-13°F) or above 45°C (114°F).</p>	<p>MALSR</p>	<p>MISSED APPROACH: Climb to 10000 on track 173° to JAKUR and on track 200° to HOHUM and hold.</p>
---	--------------	--

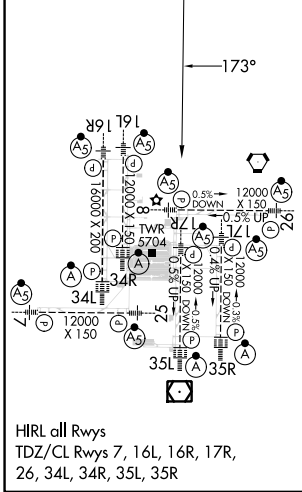
D-ATIS 125.6 379.9 (ARR) 134.025 (DEP)	DENVER APP CON 119.3 307.3 (N) 120.35 379.3 (S)	DENVER TOWER 124.3 322.45	GND CON 121.35 379.175 (W) 121.85 377.1 (E)	CLNC DEL 118.75	CPDLC
--	---	-------------------------------------	---	---------------------------	-------

RADAR REQUIRED

A 6260



ELEV 5434	D	TDZE 5392
-----------	----------	-----------



HIRL all Rwys
TDZ/CL Rwys 7, 16L, 16R, 17R,
26, 34L, 34R, 35L, 35R

10000	JAKUR	tr 173°	HOHUM	tr 200°	VGSI and RNAV glidepath not coincident (VGSI Angle 3.00°/TCH 69°).	JNKBX
See planview for multiple IF locations.						JNKBX
RWY 17R		7000	7700	173°	7000	GP 3.00° TCH 60
		4.9 NM	2.4 NM			
CATEGORY	A	B	C	D		
RNP 0.10 DA	5722/32 330 (300-5/8)					
RNP 0.30 DA	5894/60 502 (500-1¼)					

AUTHORIZATION REQUIRED

SW-1, 26 DEC 2024 to 23 JAN 2025

SW-1, 26 DEC 2024 to 23 JAN 2025