

WAAS CH 90318 W34B	APP CRS 353°	Rwy Idg 12000 TDZE 5354 Apt Elev 5434
--	------------------------	--

RNAV (GPS) Y RWY 34R

DENVER INTL (DEN)

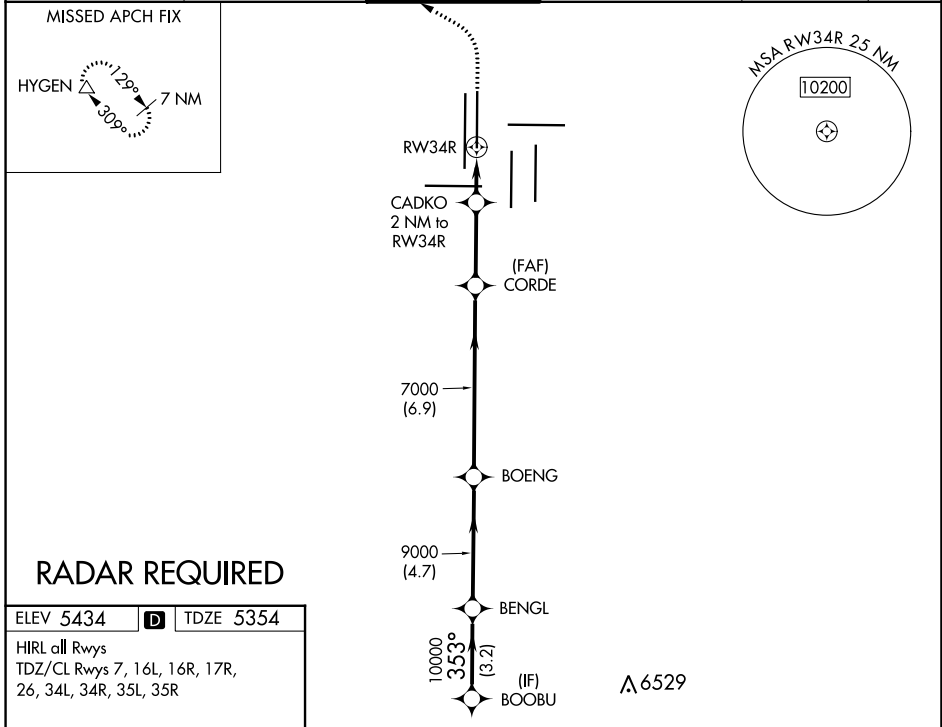
⚠ For uncompensated Baro-VNAV systems, LNAV/VNAV NA below -25°C (-13°F) or above 46°C (114°F). DME/DME RNP-0.3 NA. LNAV procedure NA during simultaneous operations. Simultaneous approach authorized with Rwy 35L/R. Use of FD or AP providing RNAV track guidance required during simultaneous operations.

ALS-F-2



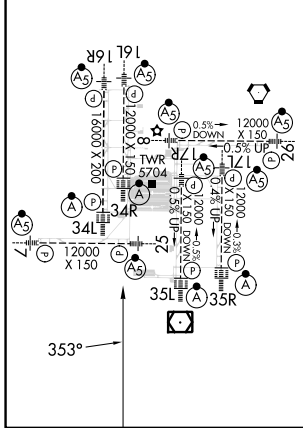
MISSED APPROACH: Climb to 6000 then climbing left turn to 10000 direct HYGEM and hold.

D-ATIS 125.6 379.9 (ARR) 134.025 (DEP)	DENVER APP CON 119.3 307.3 (N) 120.35 379.3 (S)	DENVER TOWER 135.3 351.95	GND CON 121.35 379.175 (W) 121.85 377.1 (E)	CLNC DEL 118.75	CPDLC
--	---	-------------------------------------	---	---------------------------	-------



ELEV 5434	D	TDZE 5354
-----------	----------	-----------

HIRL all Rwys
TDZ/CL Rwys 7, 16L, 16R, 17R,
26, 34L, 34R, 35L, 35R



BOOBU		BENGL		BOENG		CORDE		CADKO		RWY 34R	
10000		9000		7000		6000		10000		HYGEM	
GP 3.00°		TCH 59		*6040		*LNAV only					
3.2 NM		4.7 NM		6.9 NM		3 NM		2 NM			
CATEGORY	A		B		C		D				
LPV DA			5554/18		200 (200-½)						
LNAV/VNAV DA			5838/60		484 (500-1¼)						
LNAV MDA	5940/24		586 (600-½)		5940-1¼		586 (600-1¼)				

SW-1, 26 DEC 2024 to 23 JAN 2025

SW-1, 26 DEC 2024 to 23 JAN 2025