

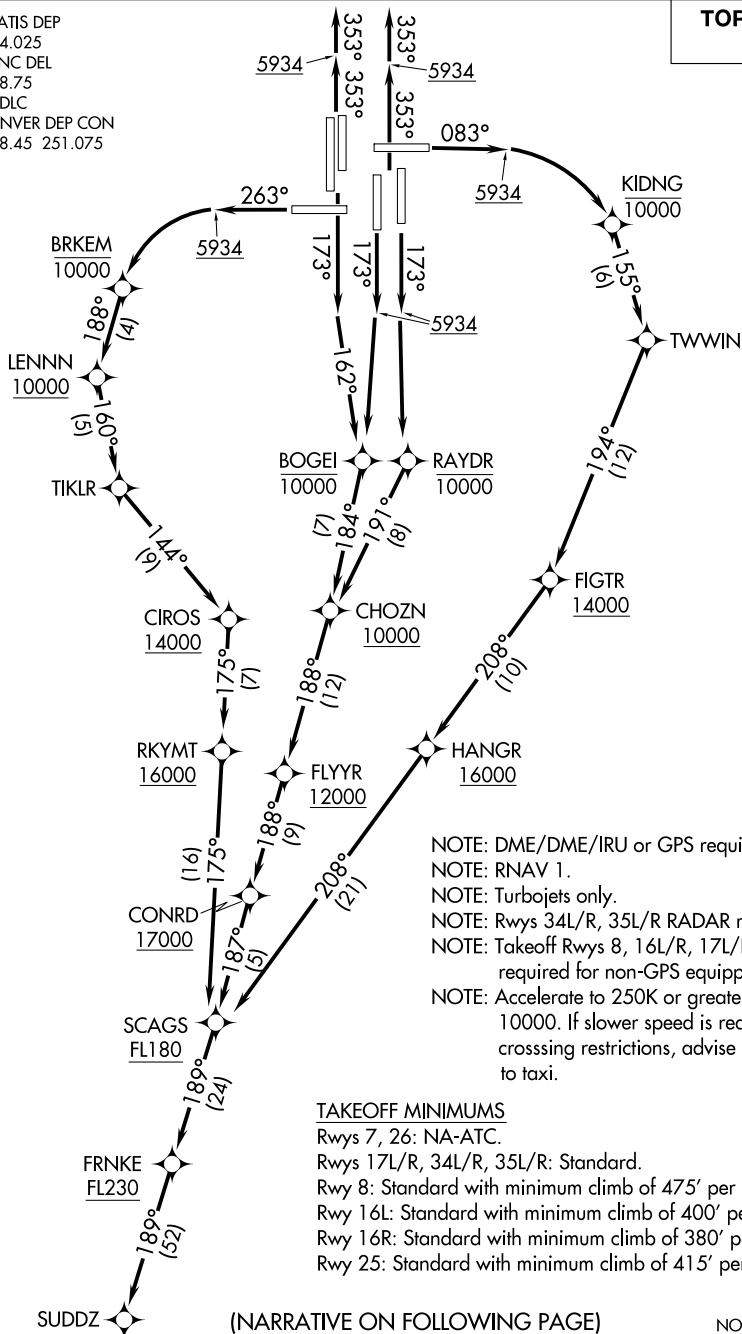
# SUDDZ ONE DEPARTURE (RNAV)

AL-9077 (FAA)

DENVER INTL (DEN)  
DENVER, COLORADO

**TOP ALTITUDE:  
FL230**

D-ATIS DEP  
134.025  
CLNC DEL  
118.75  
CPDLC  
DENVER DEP CON  
128.45 251.075



NOTE: DME/DME/IRU or GPS required.  
 NOTE: RNAV 1.  
 NOTE: Turbojets only.  
 NOTE: Rws 34L/R, 35L/R RADAR required.  
 NOTE: Takeoff Rws 8, 16L/R, 17L/R, 25, RADAR required for non-GPS equipped aircraft.  
 NOTE: Accelerate to 250K or greater upon reaching 10000. If slower speed is required to meet crossing restrictions, advise CLNC DEL prior to taxi.

### TAKEOFF MINIMUMS

Rws 7, 26: NA-ATC.  
 Rws 17L/R, 34L/R, 35L/R: Standard.  
 Rwy 8: Standard with minimum climb of 475' per NM to 5934.  
 Rwy 16L: Standard with minimum climb of 400' per NM to 5934.  
 Rwy 16R: Standard with minimum climb of 380' per NM to 5934.  
 Rwy 25: Standard with minimum climb of 415' per NM to 5934.

(NARRATIVE ON FOLLOWING PAGE)

NOTE: Chart not to scale.

# SUDDZ ONE DEPARTURE (RNAV)

SW-1, 26 DEC 2024 to 23 JAN 2025

SW-1, 26 DEC 2024 to 23 JAN 2025