

(TBARR.TBARR3) 23110

AL-9077 (FAA)

DENVER INTL (DEN)
DENVER, COLORADO

TBARR THREE ARRIVAL (RNAV) Arrival Routes

DENVER APP CON

120.35 379.3

D-ATIS ARR

125.6 379.9

DENVER TOWER

128.75 273.55 (Rwy 7-25)

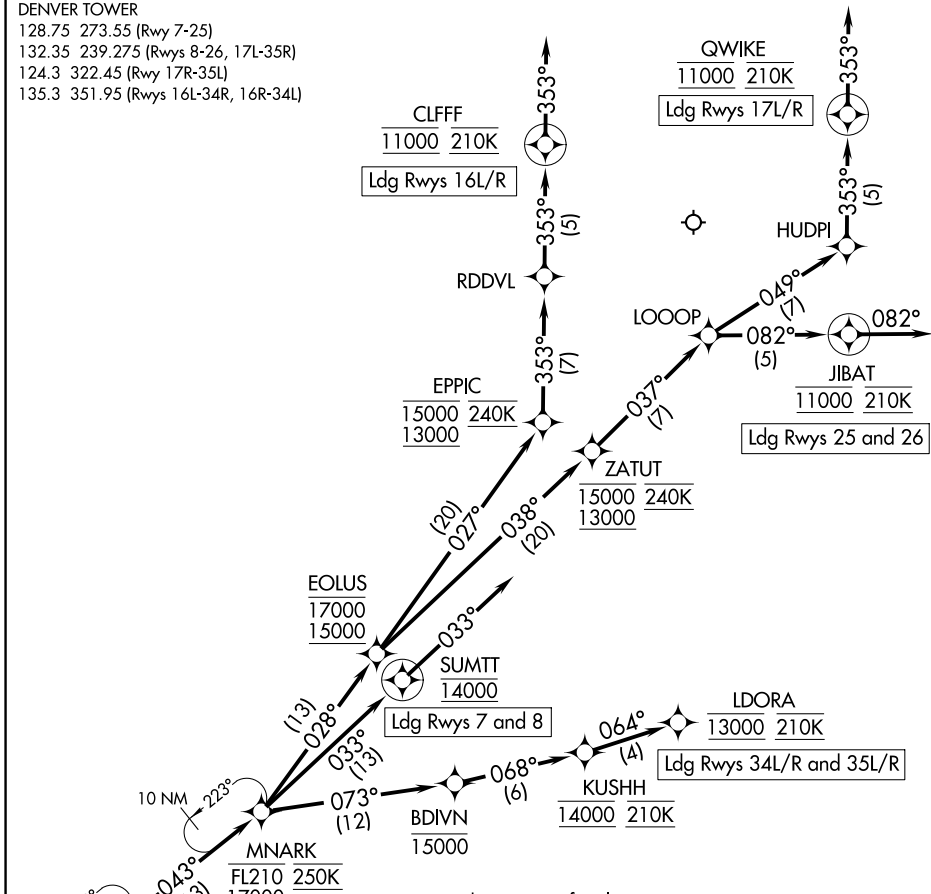
132.35 239.275 (Rwys 8-26, 17L-35R)

124.3 322.45 (Rwy 17R-35L)

135.3 351.95 (Rwys 16L-34R, 16R-34L)

RNAV 1-DME/DME/IRU or GPS

RADAR required for non-GPS equipped aircraft



SW-1, 26 DEC 2024 to 23 JAN 2025

SW-1, 26 DEC 2024 to 23 JAN 2025

- NOTE: Turbojet aircraft only.
- NOTE: Turbojet aircraft descend via MACH number until intercepting 280K. Maintain 280K until slowed by STAR.
- NOTE: Denver Center will issue "descend via" clearance and landing direction.
- NOTE: Expect runway assignment on initial contact with Denver TRACON.
- NOTE: Landing north select Rwy 34R transition.
- NOTE: Landing south select Rwy 16R transition.
- NOTE: Landing east select Rwy 7 transition.
- NOTE: Landing west select Rwy 26 transition.

(NARRATIVE ON FOLLOWING PAGE)

NOTE: Chart not to scale.

TBARR THREE ARRIVAL (RNAV) Arrival Routes

(TBARR.TBARR3) 07OCT21

DENVER, COLORADO
DENVER INTL (DEN)