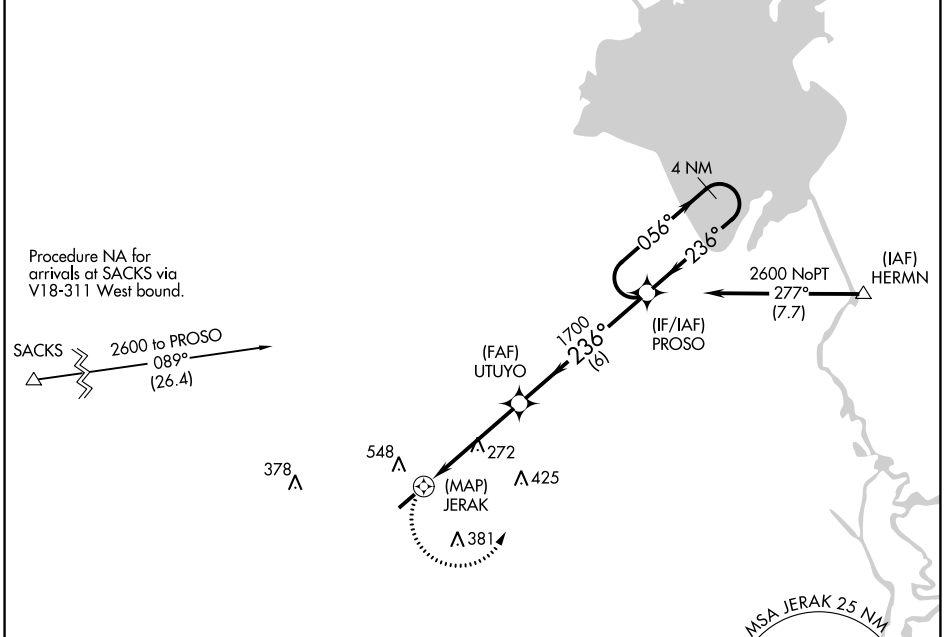


APP CRS	Rwy Idg	<b>5000</b>
<b>236°</b>	TDZE	<b>56</b>
	Apt Elev	<b>56</b>

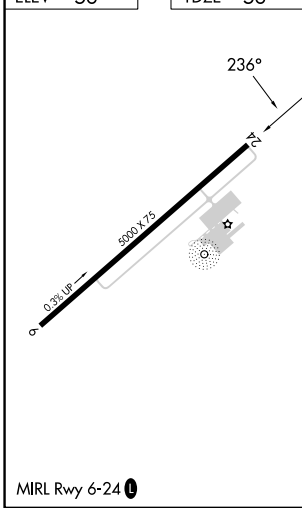
# RNAV (GPS) RWY 24

SUMMERVILLE (DYB)

RNP APCH-GPS.		MISSED APPROACH: Climbing left turn to 2600 direct PROSO and hold.
<p>▼ ▲</p> Straight-in/Circling Rwy 24 NA at night. Rwy 24 helicopter visibility reduction below 1 SM NA.		
AWOS-3 <b>119.575</b>	CHARLESTON APP CON <b>120.7 306.925</b>	UNICOM <b>123.0</b> (CTAF) <b>①</b>



ELEV 56	TDZE 56
---------	---------



2600	PROSO	Visual Segment - Obstacles.	4 NM Holding Pattern	
<p>0.5      4.5 NM      6 NM</p>				
CATEGORY	A	B	C	D
LNAV MDA	540-1	484 (500-1)	540-1 <sup>3</sup> / <sub>8</sub> 484 (500-1 <sup>3</sup> / <sub>8</sub> )	NA
<b>C</b> CIRCLING	860-1 804 (900-1)	860-1 <sup>1</sup> / <sub>4</sub> 804 (900-1 <sup>1</sup> / <sub>4</sub> )	860-2 <sup>1</sup> / <sub>4</sub> 804 (900-2 <sup>1</sup> / <sub>4</sub> )	NA

SE-2, 26 DEC 2024 to 23 JAN 2025

SE-2, 26 DEC 2024 to 23 JAN 2025