

WAAS CH 42506 W05A	APP CRS 051°	Rwy Idg TDZE Apt Elev	5000 235 235
--	------------------------	-----------------------------	---

RNAV (GPS) RWY 5

COOK COUNTY (15J)

RNP APCH - GPS.

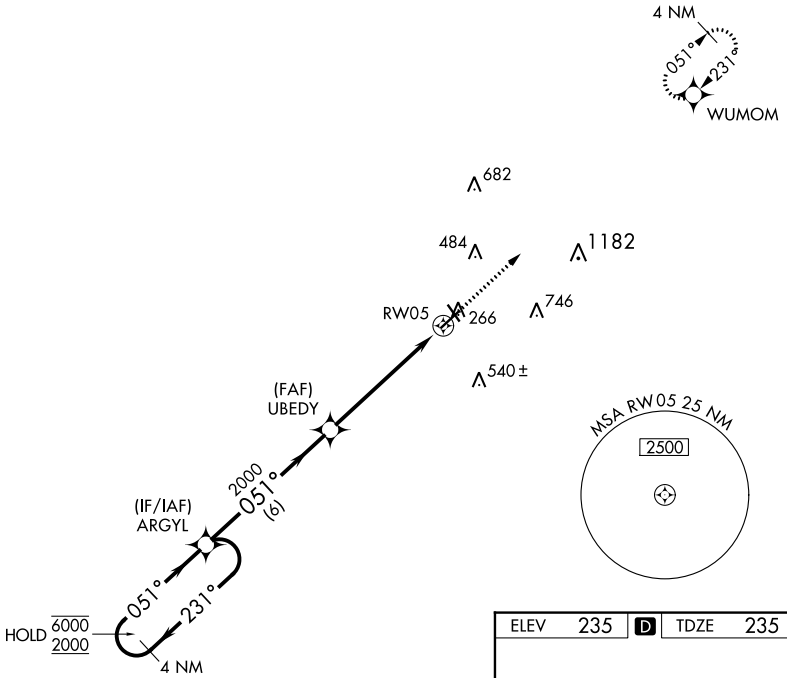
- ▼ Procedure NA at night. Rwy 5 helicopter visibility reduction below 1 SM NA.
- ▲ For uncompensated Baro-VNAV systems, LNAV/VNAV NA below -15°C or above 54°C.

MISSED APPROACH: Climb to 3000 direct WUMOM and hold.

AWOS-3PT
118.025

VALDOSTA APP CON★
126.6 285.6

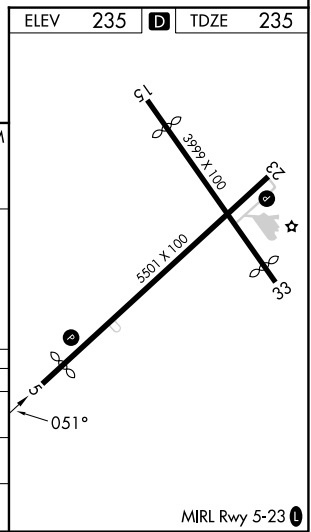
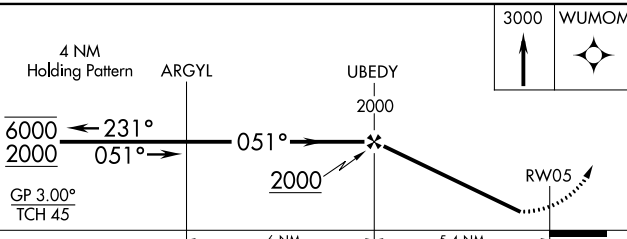
UNICOM
122.8 (CTAF) 0



SE-4, 26 DEC 2024 to 23 JAN 2025

SE-4, 26 DEC 2024 to 23 JAN 2025

ELEV	235	D	TDZE	235
------	-----	---	------	-----



CATEGORY	A	B	C	D
LPV DA	534-1		299 (300-1)	
LNAV/VNAV DA	622-1 1/8		387 (400-1 1/8)	
LNAV MDA	740-1	505 (600-1)	740-1 3/8	505 (600-1 3/8)

MIRL Rwy 5-23 0