

WAAS CH <b>42741</b> W <b>11A</b>	APP CRS <b>111°</b>	Rwy Idg <b>4982</b> TDZE <b>128</b> Apt Elev <b>128</b>
---	------------------------	---

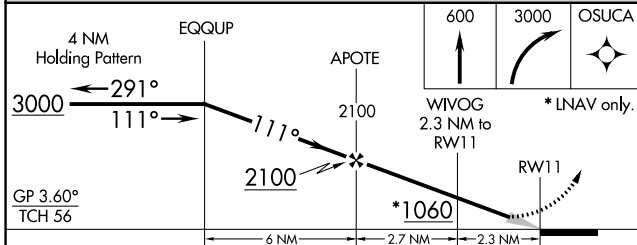
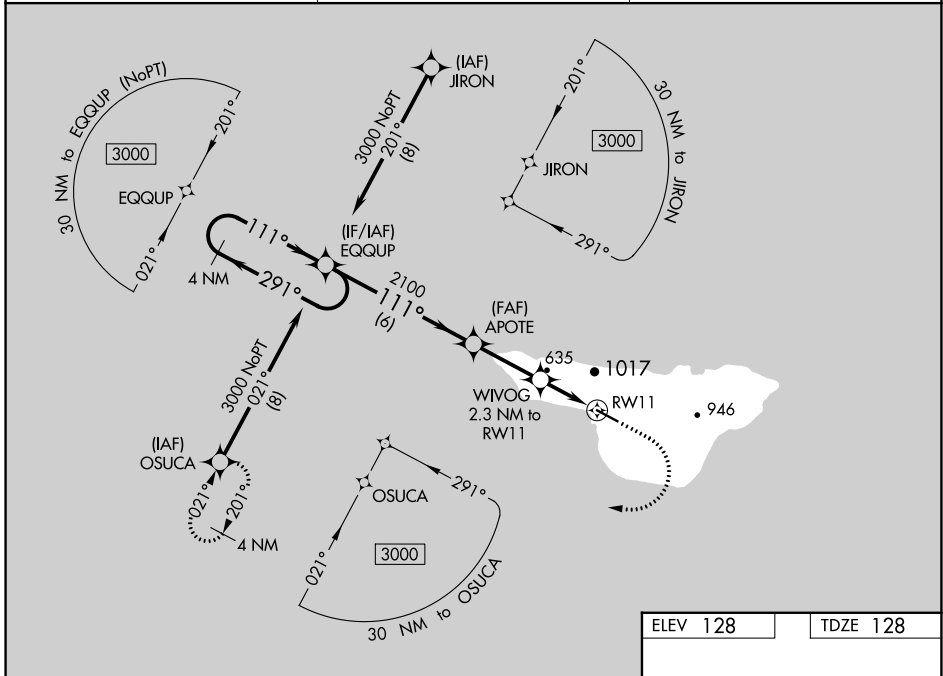
# RNAV (GPS) RWY 11

ST GEORGE (PBV) (PAPB)

**⚠** For uncompensated Baro-VNAV systems, LNAV/VNAV NA below -14°C (7°F) or above 47°C (117°F). DME/DME RNP-0.3 NA. Circling NA north of Rwy 11-29. Inop table does not apply to LPV all Cats and LNAV Cat A. For inop ALS, increase LNAV/VNAV all Cats visibility to 2½ SM. For inop ALS, increase LNAV Cat C visibility to 2½ SM.

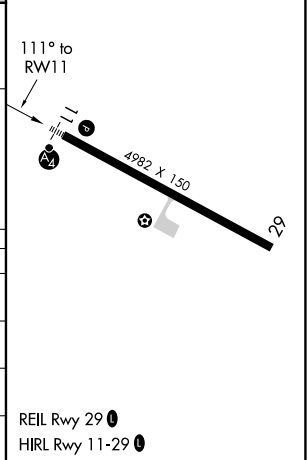
**MALSF**  
 MISSED APPROACH: Climb to 600 then climbing right turn to 3000 direct OSUCA and hold.

ASOS <b>135.45</b>	ANCHORAGE CENTER <b>119.1 339.8</b>	CTAF <b>122.8</b>
-----------------------	--	----------------------



ELEV 128	TDZE 128
----------	----------

CATEGORY	A	B	C	D
LPV DA	428-1	300 (300-1)		NA
LNAV/VNAV DA	957-2	829 (900-2)		NA
LNAV MDA	900-1	772 (800-1)	900-2 772 (800-2)	NA
<b>C</b> CIRCLING	900-1 772 (800-1)	980-1¼ 852 (900-1¼)	980-2½ 852 (900-2½)	NA



AK, 26 DEC 2024 to 20 FEB 2025

AK, 26 DEC 2024 to 20 FEB 2025