

APP CRS	Rwy Idg	5501
198°	TDZE	2131
	Apt Elev	2131

RNAV (GPS) Y RWY 20

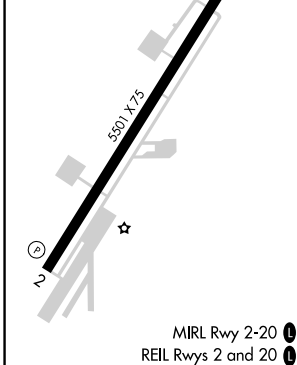
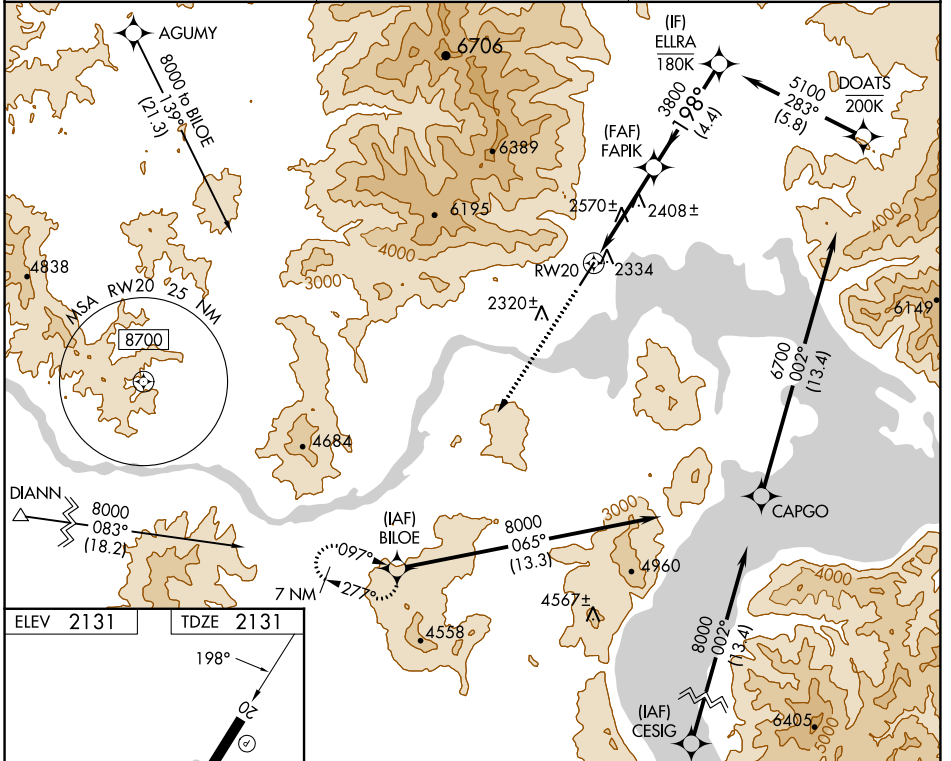
SANDPOINT (SZT)

RNP APCH.

⚠ Circling NA west of Rwy 2-20. Rwy 20 helicopter visibility reduction below 3/4 SM NA. VDP NA with Deer Park altimeter setting. When local altimeter not received, use Deer Park altimeter setting and increase all MDA 120 feet.

⚠ MISSED APPROACH: Climb to 6600 direct BILOE and hold, continue climb in hold to 6600.

AWOS-2 135.425	SEATTLE CENTER 123.95 290.55	UNICOM 122.7 (CTAF) ①
--------------------------	--	---------------------------------



6600 BILOE	VGS1 and descent angles not coincident (VGS1 Angle 3.75/TCH 50).			ELLRA
3800 FAPIK	3.1 NM to RWY20 3.77° TCH 55			5100 DOATS
<div style="display: flex; justify-content: space-around;"> 3.1 NM 0.9 NM 4.4 NM </div>				
CATEGORY	A	B	C	D
LNAV MDA	3400-1¼ 1269 (1300-1¼)	3400-1½ 1269 (1300-1½)	3400-3 1269 (1300-3)	NA
Ⓞ CIRCLING	3400-1¼ 1269 (1300-1¼)	3400-1½ 1269 (1300-1½)	3400-3 1269 (1300-3)	NA

NW-1, 26 DEC 2024 to 23 JAN 2025

NW-1, 26 DEC 2024 to 23 JAN 2025