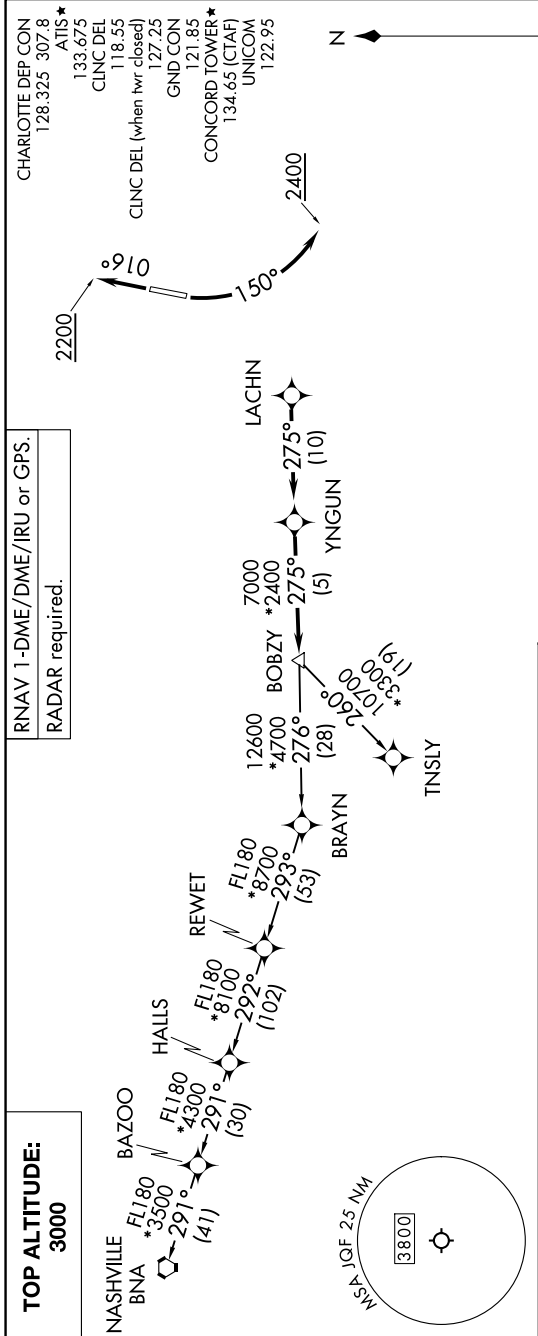


# BOBZY FIVE DEPARTURE (RNAV)

SE-2, 26 DEC 2024 to 23 JAN 2025



**TOP ALTITUDE:**  
3000

RNAV 1-DME/DME/IRU or GPS.  
RADAR required.

**DEPARTURE ROUTE DESCRIPTION**

**TAKEOFF RUNWAY 2:** Climb on heading 016° to 2200, then on heading assigned by ATC, thence, . . .

**TAKEOFF RUNWAY 20:** Climbing left turn heading 150° to 2400, then on heading assigned by ATC, thence, . . .

. . . on RADAR vectors to LACHN, then on depicted route to BOBZY, then on assigned transition. Maintain 3000, expect clearance to filed altitude within 10 minutes after departure.

NASHVILLE TRANSITION (BOBZY5.BNA)  
TNSLY TRANSITION (BOBZY5.TNSLY)

**TAKEOFF MINIMUMS**

Rwy 2: Standard.  
Rwy 20: Standard with minimum climb of 320' per NM to 2400.

- NOTE: For turbo jets only.
- NOTE: If unable to accept climb rates, advise ATC on initial contact.
- NOTE: Transponder code will be issued via PDC or Charlotte CLNC DEL.
- NOTE: Upon reaching 10000 MSL, accelerate to and maintain 280K, if unable advise ATC.

NOTE: Chart not to scale.

# BOBZY FIVE DEPARTURE (RNAV)

SE-2, 26 DEC 2024 to 23 JAN 2025