

KINGDOM FOUR DEPARTURE

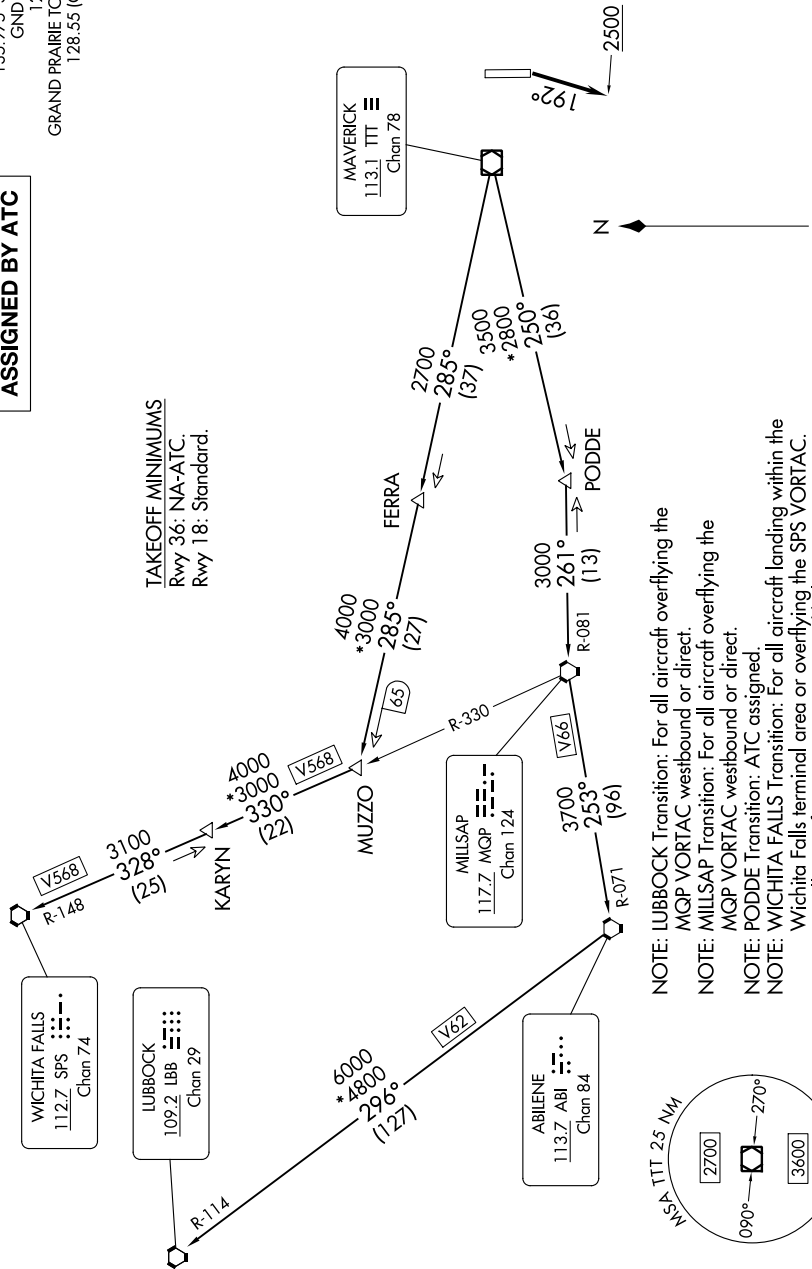
SC-2, 26 DEC 2024 to 23 JAN 2025

RADAR and DME required.

**TOP ALTITUDE:
ASSIGNED BY ATC**

LONE STAR DEP CON
135.975 379.9
GND CON
121.15
GRAND PRAIRIE TOWER ★
128.55 (CTAF)

TAKEOFF MINIMUMS
Rwy 36: NA-ATC.
Rwy 18: Standard.



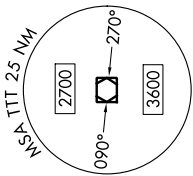
NOTE: LUBBOCK Transition: For all aircraft overlying the MQP VORTAC westbound or direct.

NOTE: MILLSAP Transition: For all aircraft overlying the MQP VORTAC westbound or direct.

NOTE: PODDE Transition: ATC assigned.

NOTE: WICHITA FALLS Transition: For all aircraft landing within the Wichita Falls terminal area or overlying the SPS VORTAC.

NOTE: For all aircraft requesting 17000 and below.



NOTE: Chart not to scale.

(CONTINUED ON FOLLOWING PAGE)

KINGDOM FOUR DEPARTURE

SC-2, 26 DEC 2024 to 23 JAN 2025