

LOC I-RPD 108.3	APP CRS 010°	Rwy Idg 6500
		TDZE 1102
		Apt Elev 1109

ILS or LOC RWY 1

RICE LAKE RGNL/CARL'S FLD (RPD)

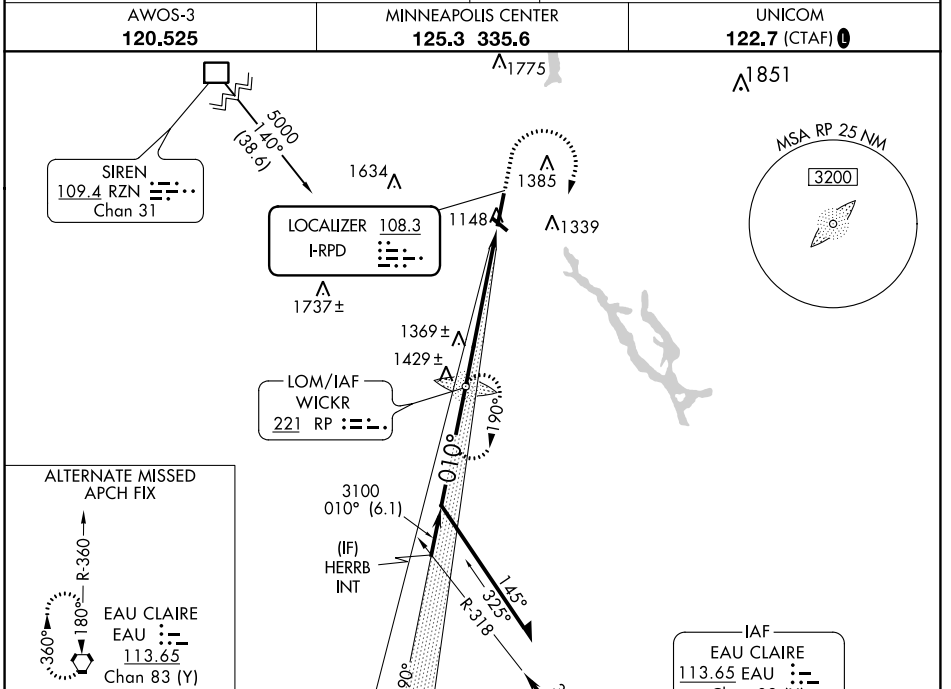
ADF required. From RZN DME: RNAV 1-GPS required.

MALSR
MISSED APPROACH: Climb to 2200 then climbing right turn to 3200 direct WICKR LOM and hold.

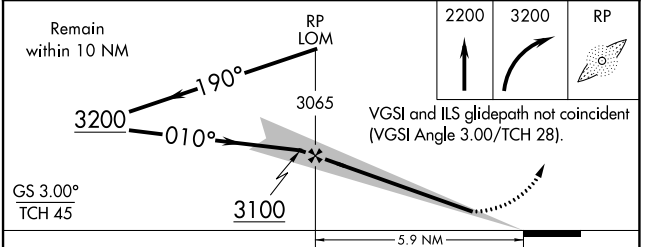
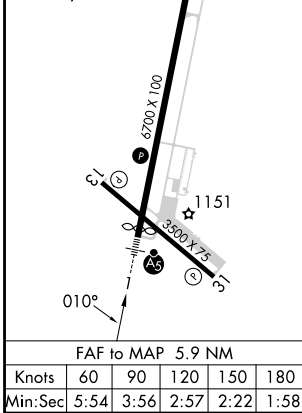
AWOS-3
120.525

MINNEAPOLIS CENTER
125.3 335.6

UNICOM
122.7 (CTAF)



ELEV 1109	TDZE 1102
REIL Rwy 13, 31	
REIL Rwy 19	
HIRL Rwy 1-19	
MIRL Rwy 13-31	



CATEGORY	A	B	C	D
S-ILS 1	1302-1/2		200 (200-1/2)	
S-LOC 1	1620-1/2	518 (600-1/2)	1620-1 518 (600-1)	1620-1 1/4 518 (600-1 1/4)
CIRCLING	1620-1 511 (600-1)	1740-1 631 (700-1)	1740-1 3/4 631 (700-1 3/4)	1940-2 3/4 831 (900-2 3/4)

EC-3, 26 DEC 2024 to 23 JAN 2025

EC-3, 26 DEC 2024 to 23 JAN 2025