

WAAS CH 86217 W01A	APP CRS 010°	Rwy ldg 6500
		TDZE 1101
		Apt Elev 1109

RNAV (GPS) RWY 1

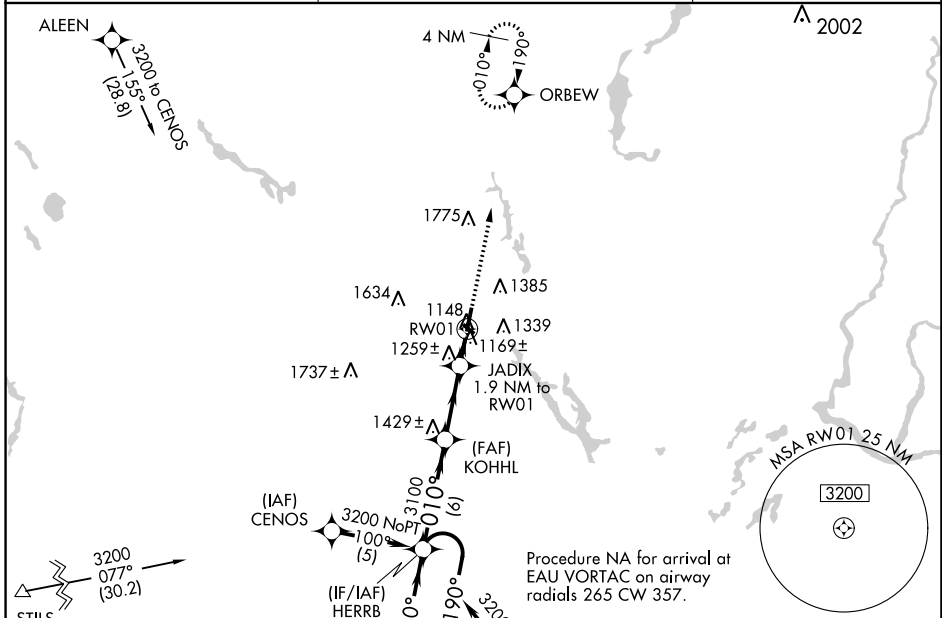
RICE LAKE RGNL/CARL'S FLD (RPD)

⚠ If local altimeter setting not received, use Chippewa Valley Rgnl altimeter setting and increase all DAs/MDAs 120 feet. DME/DME RNP-0.3 NA. Baro-VNAV NA below -17°C (3°F). Baro VNAV and VDP NA when using Chippewa Valley Rgnl altimeter setting. For inoperative MALSR, increase LPV visibility to 1, and LNAV Cat D visibility to 1¼. Circling Rwy 13, 31 NA at night.



MISSED APPROACH:
Climb to 3200 direct ORBEW and hold.

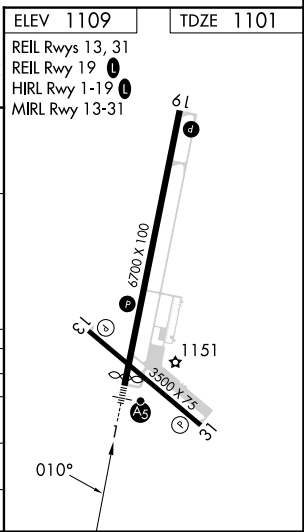
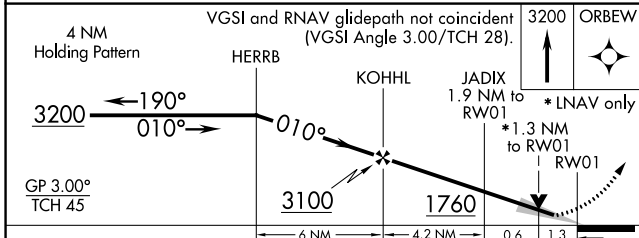
AWOS-3 120.525	MINNEAPOLIS CENTER 125.3 335.6	UNICOM 122.7 (CTAF)
---------------------------------	---	--------------------------------------



EC-3, 26 DEC 2024 to 23 JAN 2025

EC-3, 26 DEC 2024 to 23 JAN 2025

ELEV 1109	TDZE 1101
REIL Rwys 13, 31	
REIL Rwy 19	
HIRL Rwy 1-19	
MIRL Rwy 13-31	



CATEGORY	A	B	C	D
LPV DA		1390-½	289 (300-½)	
LNAV/ VNAV		1440-¾	339 (400-¾)	
LNAV MDA	1520-½	419 (500-½)	1520-¾ 419 (500-¾)	1520-1 419 (500-1)
C CIRCLING	1600-1¼ 493 (500-1¼)	1740-1¼ 631 (700-1¼)	1740-1¾ 631 (700-1¾)	1940-2¾ 831 (900-2¾)