

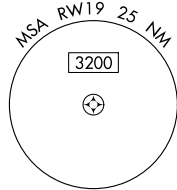
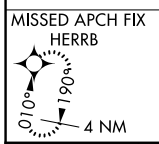
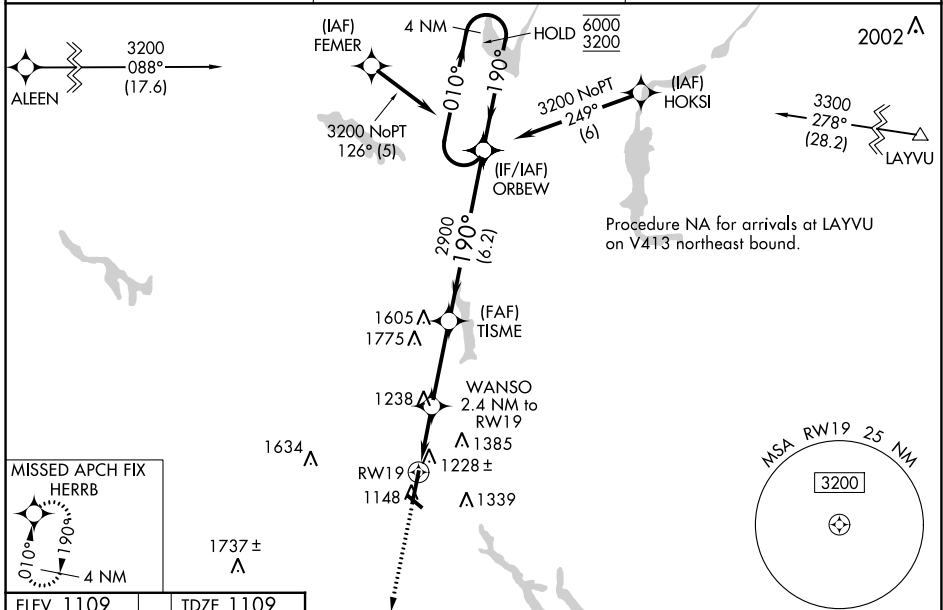
WAAS CH 93542 W19A	APP CRS 190°	Rwy ldg TDZE Apt Elev	6700 1109 1109
--	------------------------	-----------------------------	---

RNAV (GPS) RWY 19

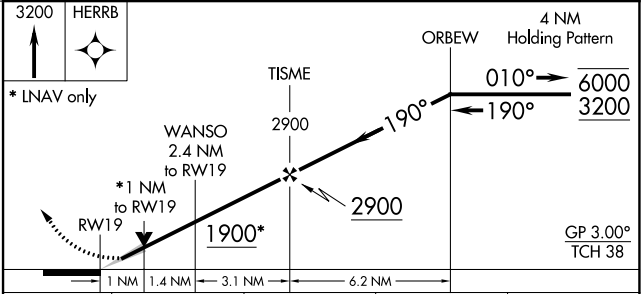
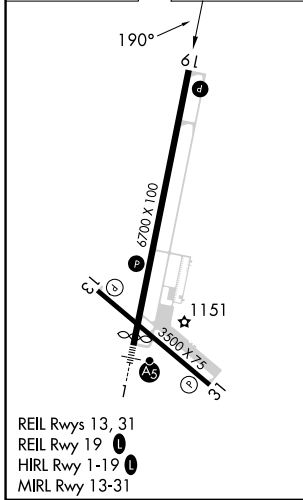
RICE LAKE RGNL/CARL'S FLD (R/PD)

RNP APCH.		MISSED APPROACH: Climb to 3200 direct HERRB and hold.
<p>Circling Rwy 13, 31 NA at night. For uncompensated Baro-VNAV systems, procedure NA below -17°C or above 54°C.</p>		

AWOS-3 120.525	MINNEAPOLIS CENTER 125.3 335.6	UNICOM 122.7 (CTAF) 0
--------------------------	--	---------------------------------



ELEV 1109	TDZE 1109
-----------	-----------



CATEGORY	A	B	C	D
LPV DA		1309-3/4	200 (200-3/4)	
LNAV/VNAV DA		1389-7/8	280 (300-7/8)	
LNAV MDA		1480-1	371 (400-1)	
CIRCLING	1580-1 471 (500-1)	1740-1 631 (700-1)	1740-1 3/4 631 (700-1 3/4)	1940-2 3/4 831 (900-2 3/4)

EC-3, 26 DEC 2024 to 23 JAN 2025

EC-3, 26 DEC 2024 to 23 JAN 2025