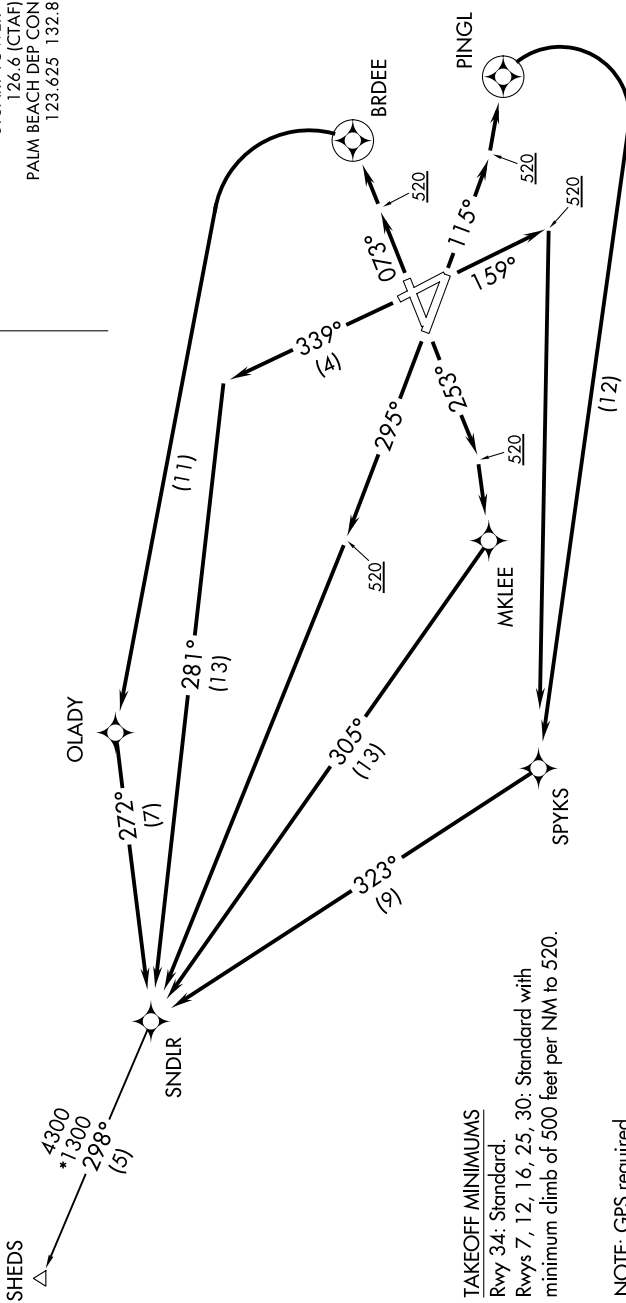


SNDLR TWO DEPARTURE (RNAV)

ATIS 134.475
GND CON 121.7
STUART TOWER* 126.6 (CTAF)
PALM BEACH DEP CON 123.625 132.8



TOP ALTITUDE:
3000



TAKEOFF MINIMUMS

Rwy 34: Standard.
Rwys 7, 12, 16, 25, 30: Standard with
minimum climb of 500 feet per NM to 520.

- NOTE: GPS required.
- NOTE: RADAR required.
- NOTE: RNAV 1.
- NOTE: For turbojet/turboprop aircraft only.
- NOTE: Transponder code will be issued via SUA ground control or PBI APP CON when tower closed.

NOTE: Chart not to scale.

(NARRATIVE CONTINUED ON FOLLOWING PAGE)

SNDLR TWO DEPARTURE (RNAV)