

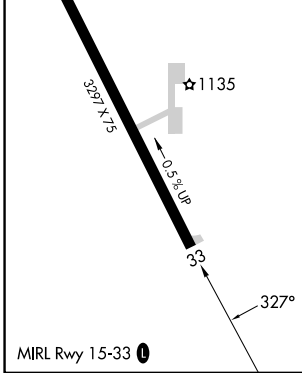
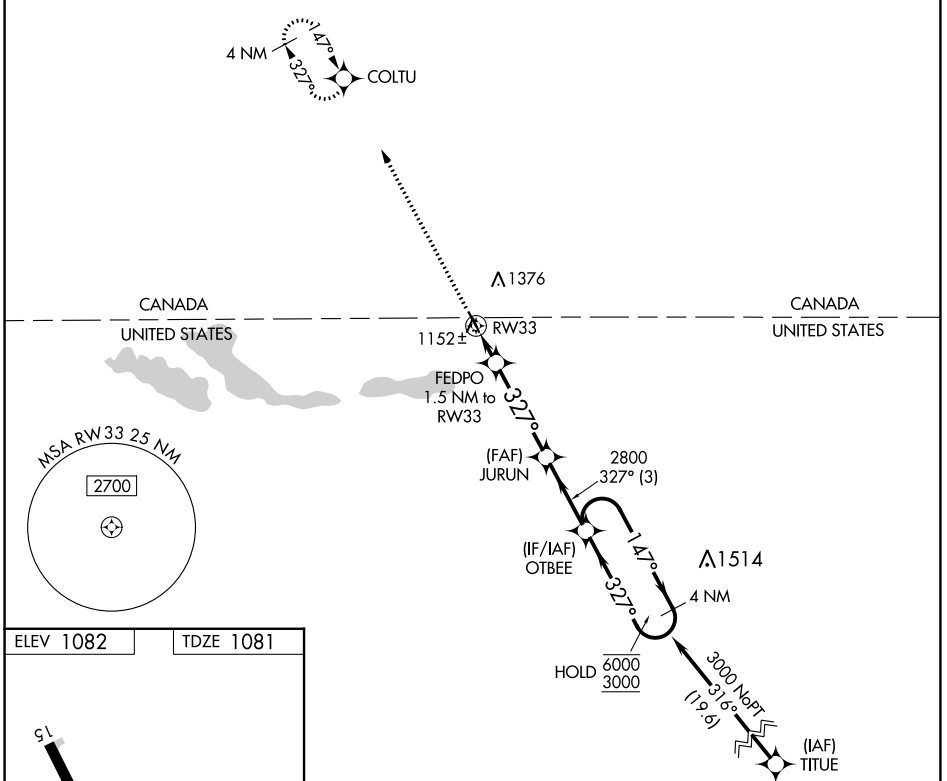
APP CRS	Rwy Idg	<b>3297</b>
<b>327°</b>	TDZE	<b>1081</b>
	Apt Elev	<b>1082</b>

# RNAV (GPS) RWY 33

PINEY PINECREEK BORDER (48Y)

RNP APCH-GPS.	MISSED APPROACH: Climb to 3700 direct COLTU and hold.
<p><b>▼</b> Use Roseau altimeter setting; when not received, use</p> <p><b>▲ NA</b> Warroad altimeter setting and increase all MDA 40 feet.</p>	

ROX AWOS-3 <b>118.075</b>	MINNEAPOLIS CENTER <b>134.75 251.1</b>	UNICOM <b>122.8 (CTAF) 0</b>
------------------------------	---	---------------------------------



3700	COLTU	JURUN	OTBEE	4 NM Holding Pattern
↑	✧			147° → 6000
		≤ 3.00° TCH 40		← 327° 3000
	FEDPO 1.5 NM to RW33	2800		
	1580			
	1.5 NM	3.8 NM	3 NM	
CATEGORY	A	B	C	D
LNAV MDA	1440-1	359 (400-1)		NA
CIRCLING	1500-1 418 (500-1)	1780-1 698 (700-1)		NA

NC-1, 26 DEC 2024 to 23 JAN 2025

NC-1, 26 DEC 2024 to 23 JAN 2025