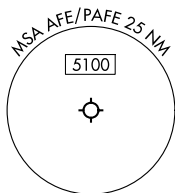
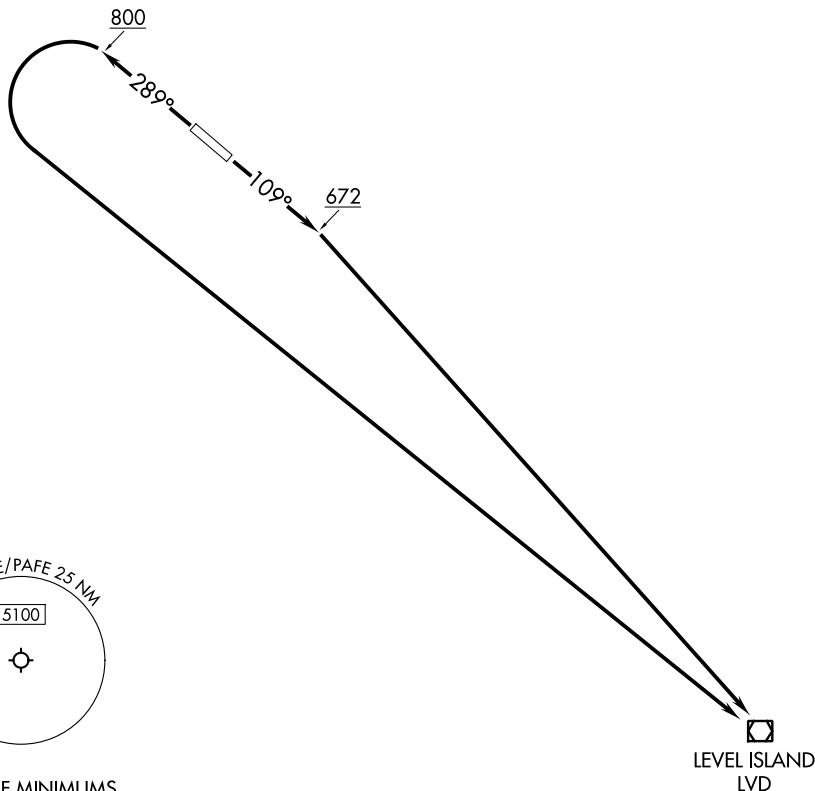


# KAKE ONE DEPARTURE (OBSTACLE) (RNAV)

ANCHORAGE CENTER  
132.175

RNP 1 - GPS.



### TAKEOFF MINIMUMS

Rwy 11: 600-3 with minimum climb of 274' per NM to 900.

Rwy 29: 500-3 with minimum climb of 395' per NM to 900.

(CONTINUED ON FOLLOWING PAGE)

NOTE: Chart not to scale.

### DEPARTURE ROUTE DESCRIPTION

TAKEOFF RUNWAY 11: Climb on heading 109° to 672, then direct LVD VOR/DME to cross LVD VOR/DME at or above MEA for route of flight.

TAKEOFF RUNWAY 29: Climb on heading 289° to 800, then climbing left turn direct LVD VOR/DME to cross LVD VOR/DME at or above MEA for route of flight.