

| | | |
|--|------------------------|---|
| WAAS CH 81834 W32A | APP CRS 325° | Rwy Idg TDZE 1819 Apt Elev 1823 |
|--|------------------------|---|

RNAV (GPS) RWY 32

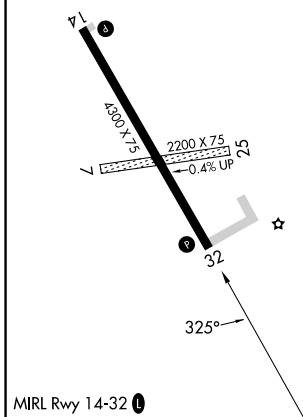
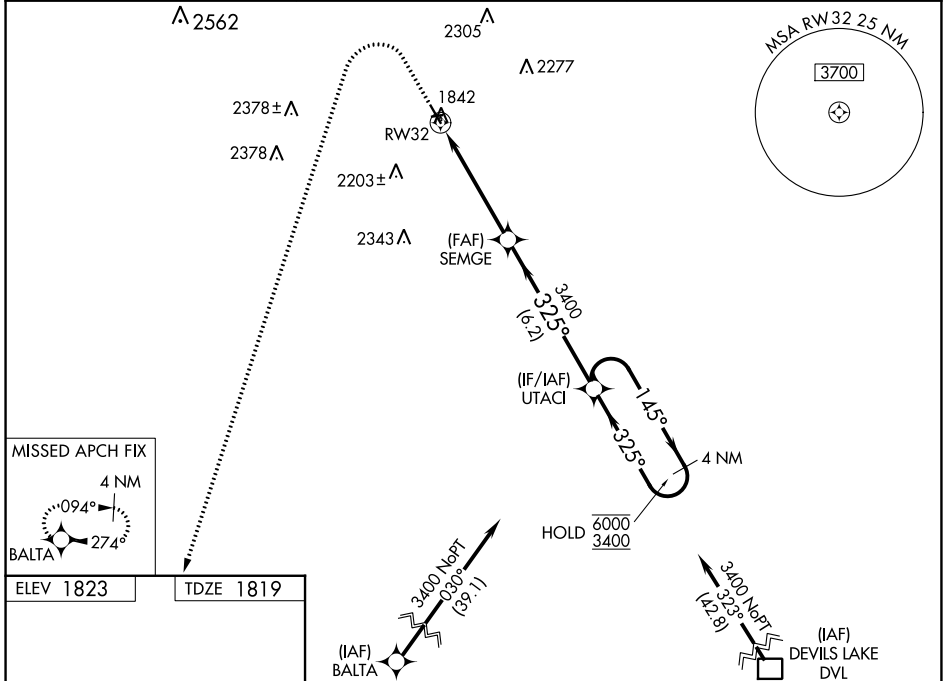
ROLLA MUNI/LEONARD KRECH FLD (Ø6D)

RNP APCH - GPS.

⚠ Circling NA to Rwys 7 and 25. Circling Rwy 14 NA at night. Baro-VNAV and VDP NA when using Cando Muni altimeter setting. Rwy 32 helicopter visibility reduction below 3/4 SM NA. For uncompensated Baro-VNAV systems, LNAV/VNAV NA below -18°C or above 54°C. When local altimeter setting not received, use Cando altimeter setting: increase LPV DA to 2183 feet; increase LNAV/VNAV DA to 2286 feet and all visibilities 3/8 SM; increase all MDAs 120 feet and LNAV visibility Cat C/D 3/8 SM, and Circling visibility Cat C/D 1/2 SM.

MISSED APPROACH: Climb to 2300 then climbing left turn to 3800 direct BALTA and hold.

| | | |
|--------------------------|--|---------------------------------|
| AWOS-3 118.125 | MINNEAPOLIS CENTER 127.6 279.6 | UNICOM 122.8 (CTAF) 0 |
|--------------------------|--|---------------------------------|



| | | | |
|----------------------|------|--------|---|
| 2300 | 3800 | BALTA | VGSi and RNAV glidepath not coincident (VGSi Angle 3.00°/TCH 27). |
| ↑ | ↶ | ✧ | |
| 1.3 NM to RWY 32 | | SEMGE | UTACI |
| 3400 | | 3400 | 6000 |
| 325° | | 325° | 145° |
| 3400 | | 3400 | 3400 |
| 1.3 NM | | 3.5 NM | 6.2 NM |
| 4 NM Holding Pattern | | | |
| GP 3.00° | | | TCH 45 |

| CATEGORY | A | B | C | D |
|-------------------|-----------------------|-----------------------|-----------------------|-------------------------------|
| LPV DA | | 2069-1 | 250 (300-1) | |
| LNAV/VNAV DA | | 2162-1 | 343 (400-1) | |
| LNAV MDA | 2260-1 | 441 (500-1) | 2260-1 3/8 | 441 (500-1 3/8) |
| C CIRCLING | 2260-1 437 (500-1) | 2340-1 517 (600-1) | 2560-2 737 (800-2) | 2700-2 3/4 877 (900-2 3/4) |

NC-1, 26 DEC 2024 to 23 JAN 2025

NC-1, 26 DEC 2024 to 23 JAN 2025