

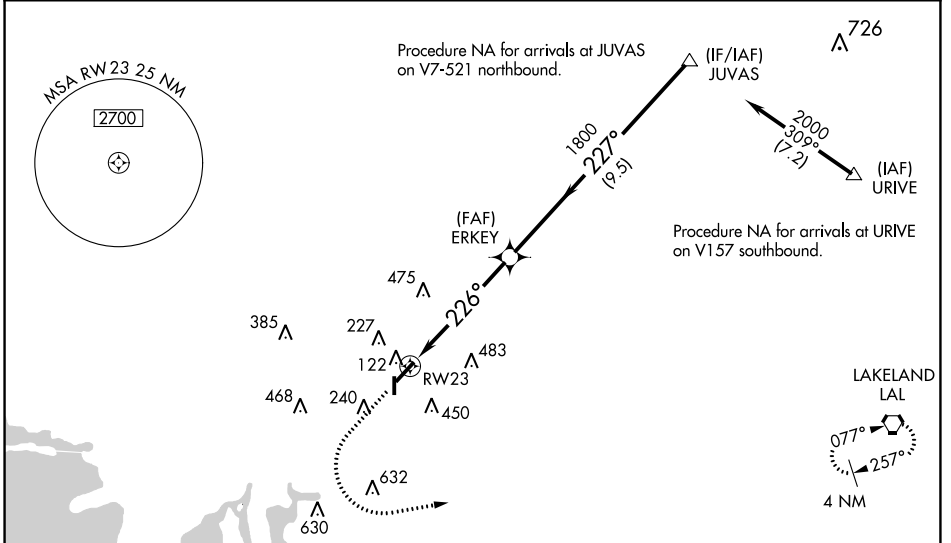
| | | |
|--|------------------------|---|
| WAAS CH 78100 W23A | APP CRS 226° | Rwy Idg 4200 TDZE 21 Apt Elev 21 |
|--|------------------------|---|

RNAV (GPS) RWY 23

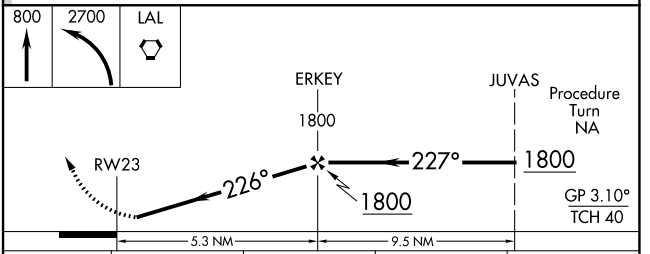
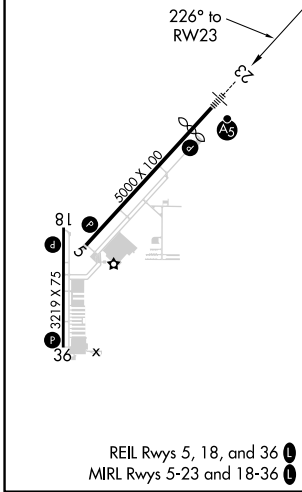
TAMPA EXEC (VDF)

| | | |
|--|-----------|---|
| RNP APCH-GPS. <p>▼ Inop table does not apply to LPV and LNAV Cat A/B. Baro-VNAV NA when using Tampa Intl altimeter setting. For uncompensated Baro-VNAV systems, LNAV/VNAV NA below -15°C (5°F) or above 54°C (130°F). Rwy 23 helicopter visibility reduction below 3/4 SM NA. When local altimeter setting not received, use Tampa Intl altimeter setting and increase LPV DA to 323 feet, LNAV/VNAV DA to 513; increase all MDAs 40 feet, and LNAV and Circling Cat C visibilities 1/4 SM. Circling Rwy 18, 36 NA at night.</p> | MALSR | MISSED APPROACH: Climb to 800 then climbing left turn to 2700 direct to LAL VORTAC and hold. |
|--|-----------|---|

| | | |
|--------------------------|-------------------------------------|-------------------------------|
| AWOS-3 121.125 | TAMPA APP CON 119.9 290.3 | UNICOM 122.7 (CTAF) |
|--------------------------|-------------------------------------|-------------------------------|



| | | |
|---------|----------|---------|
| ELEV 21 | D | TDZE 21 |
|---------|----------|---------|



| CATEGORY | A | B | C | D |
|--------------|----------------------|----------------------|------------------------------|----|
| LPV DA | 298-1 | 277 (300-1) | | NA |
| LNAV/VNAV DA | 488-1 1/8 | 467 (500-1 1/8) | | NA |
| LNAV MDA | 560-1 | 539 (600-1) | | NA |
| CIRCLING | 560-1 539 (600-1) | 760-1 739 (800-1) | 800-2 1/4 779 (800-2 1/4) | NA |

SE-3, 26 DEC 2024 to 23 JAN 2025

SE-3, 26 DEC 2024 to 23 JAN 2025