

WAAS CH 69427 W11A	APP CRS 114°	Rwy Idg TDZE 2131 Apt Elev 2131
--	------------------------	---

RNAV (GPS) RWY 11

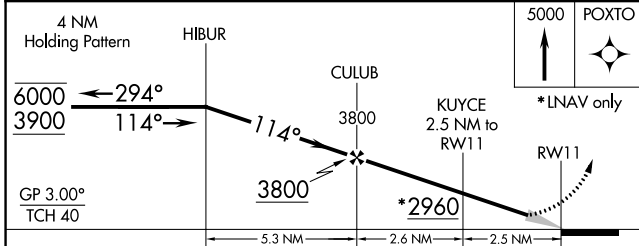
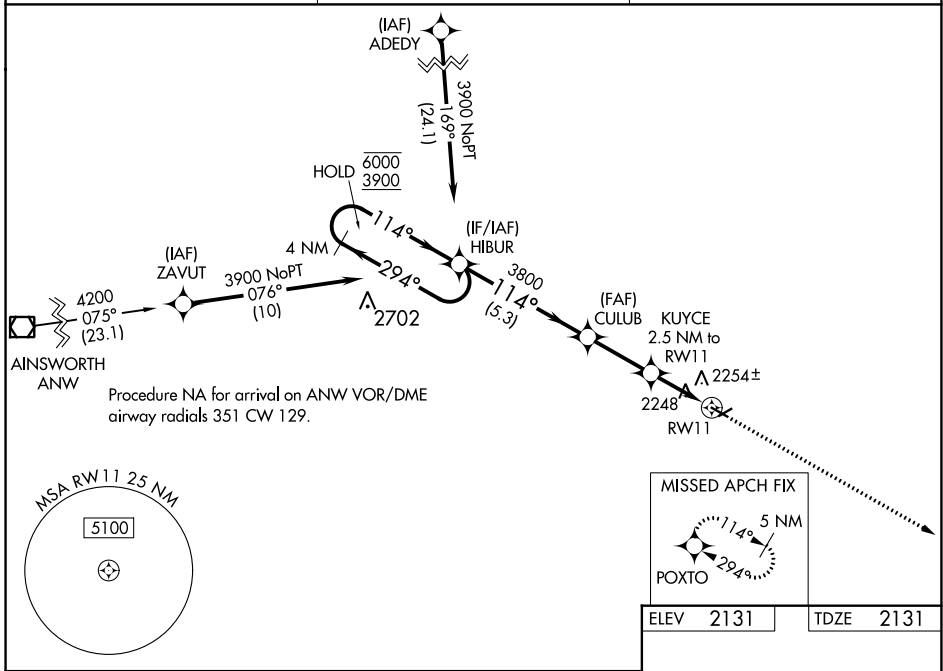
STUART-ATKINSON MUNI (8V2)

RNP APCH.

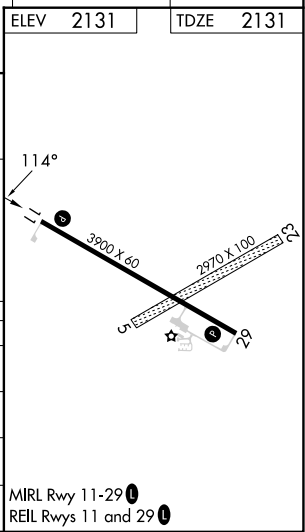
NA Circling NA to Rwy's 5 and 23. Baro-VNAV NA. Use O'Neill altimeter setting; when not received, use Ainsworth altimeter setting; increase LPV DA to 2547 feet and visibility all Cats to 1½ SM; increase LNAV/VNAV DA to 2691 feet and visibility all Cats to 1½ SM; increase all MDA 120 feet.

MISSED APPROACH: Climb to 5000 direct POXTO and hold, continue climb-in-hold to 5000.

ONL AWOS-3 121.125	MINNEAPOLIS CENTER 128.0 257.95	CTAF 122.9
------------------------------	---	----------------------



CATEGORY	A	B	C	D
LPV DA	2433-1	302 (400-1)		NA
LNAV/VNAV DA	2577-1⅜	446 (500-1⅝)		NA
LNAV MDA	2560-1	429 (500-1)		NA
CIRCLING	2620-1 489 (500-1)	2640-1 509 (600-1)		NA



NC-2, 26 DEC 2024 to 23 JAN 2025

NC-2, 26 DEC 2024 to 23 JAN 2025

MIRL Rwy 11-29
REL Rwy's 11 and 29