

APP CRS 154°	Rwy Idg TDZE Apt Elev	N/A N/A 150
------------------------	-----------------------------	--

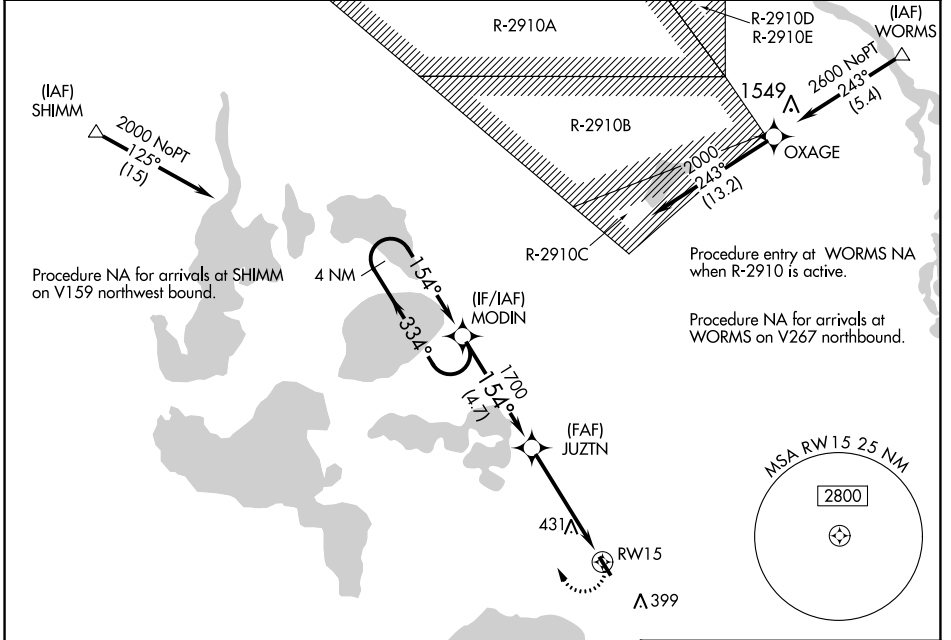
RNAV (GPS)-A

ORLANDO APOPKA (X04)

NA DME/DME RNP-0.3 NA. Procedure NA at night. Visibility reduction by helicopters NA. Use Leesburg Intl altimeter setting; when not received, use Executive altimeter setting.

MISSED APPROACH: Climbing right turn to 2000 direct MODIN and hold.

LEE ASOS 134.325	ORLANDO APP CON 135.3 351.9	UNICOM 123.05 (CTAF) 1
----------------------------	---------------------------------------	---



SE-3, 26 DEC 2024 to 23 JAN 2025

SE-3, 26 DEC 2024 to 23 JAN 2025

